



JUST FACTS

PRODUCT CATALOGUE

STALFLEX SP. Z O.O.

CONTENTS

RACK CABINETS 10" 19"

Professional	6
Standard	8
Series A	10
Hanging RACK Cabinets	12
RACK Enclosures	13

RACK SHELVES 10" 19"

Fixed shelves Professional	16
Fixed shelves Standard	17
Adjustable shelves Professional	18
Adjustable shelves Standard	19
Retractable shelves	20

RACK ACCESSORIES 10" 19"

RACK drawers	23
Masks	24
LED Panel	25
Voltage distribution panel	26
Brush cable organisers	27
Organisers	28
Wall brackets RACK 19"	29
RACK stands	30

FIBER OPTIC NETWORKS

Fiber optic drawer	32
Fiber optic switch	32
Patch panels	33
Fixed switch	34
Patch modular panels	35

CABINETS

Surface mounted hydraulic manifold cabinets	38
Surface mounted hydraulic manifold cabinets DIN	38
Flush mounted hydraulic manifold cabinets	40
Flush mounted hydraulic manifold cabinets DIN	40
Universal cases	44
TPR cases	45
OMP cases	46

HOLDERS FOR CAMERAS

Post brackets for cameras	50
Corner mounts for cameras	51
Mini loco bracket	52

HOUSE EQUIPMENT

Flush-mounted bio-fireplaces	56
Surface bio-fireplaces	57
Garden fireplaces	58

UNITED KINGDOM
UNIT 8, 11 STONE WAY,
CANTERBURY, KENT,
CT3 4GP



UNITED
KINGDOM

STALFLEX

POLAND
97-200 TOMASZÓW MAZOWIECKI
UL. PIASKOWA 134A

POLAND



@stalflex



@stalflex



@stalflex8565



TECHNOLOGY



TEAMWORK



GLOBAL THINKING

INTERNATIONAL SALES SPECIALISTS

+48 530 007 780

+48 530 112 255

+48 784 066 203

www.stalflex.pl





We started in 2015 practically from scratch, with faith, vision and willingness to work hard. Our first headquarters, located in a small building in Smardzewice, was where we started our adventure.

Firstly, we've been providing services of laser cutting, bending, welding and riveting. We constantly strived to improve our skills, this is why we invested in state-of-the-art equipment and developed our team to meet the growing expectations of our clients. Passion, combined with determination, proved to be the key to success.

In 2018 we've reached a significant milestone in our history — we moved the company to the new headquarters in Tomaszów Mazowiecki which provided us with more production and warehouse space which we needed.

Today we sell our own products in Poland and abroad, creating them in an ultra-modern machine park.



Stalflex is first and foremost a team of professionals with long-term experience, advanced technical knowledge and access to state-of-the-art equipment. The combination of these three factors gives a guarantee of quality, precision and finally the satisfaction of our customers.

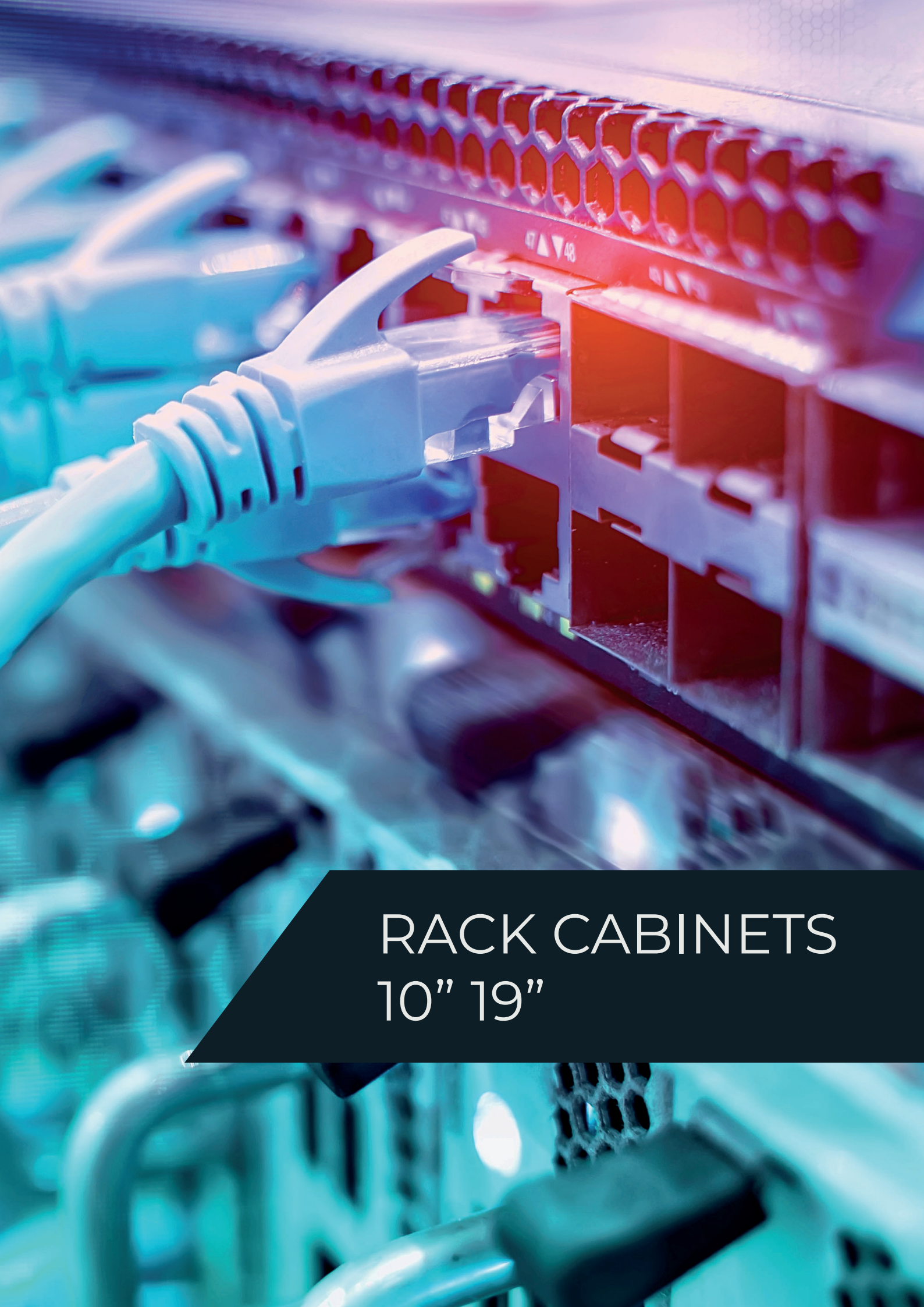
Today, we are a leading Polish manufacturer of products for telecommunication branch. However we are not limited to one type of products. We also create other metal accessories e.g. bio-fireplaces.

We care about quality at every stage of order execution, from production to professional consulting to customer's service. We are happy to take on new challenges, which is why our offer is flexible and our products are perfectly matching the needs of our customers.



RACK CABINETS 10" 19"

Professional	6
Standard	8
Series A	10
Hanging RACK Cabinets	12
RACK Enclosures	13



RACK CABINETS 10" 19"

TECHNICAL PARAMETERS:

- DC01 powder coated steel
- tool-free assembly of the outer panels
- access from all sides thanks to removable outer panels
- brush entries at the top and bottom of the cabinet
- higher standard authoriel lock
- possibility of mounting up to four fans - 2 x at the top and 2 x at the bottom of the cabinet (screw spacing: 105x105 mm; $\varnothing 120$ mm)
- additional ventilation holes
- glass front door with the option of mounting on the left or right side
- adjustable mounting of rack frames every 30 mm
- cutouts in the side frame panels for easy screwing
- additional holes in the side frame panels enable easy hanging and screwing the frame to the wall
- standard RACK 19"
- height: 4U,6U,9U,12U
- depth: 450, 600 mm
- max. load 70kg
- maximum depth of mountable device:
450 mm = 400 mm; 600 mm = 550 mm
- colors: RAL 9005 RAL 7035

brush entries make it easier to insert cables into the cabinet

additional ventilation

place for fans $\varnothing 120$ mm

authoriel lock

tempered glass

tool-free assembly with the removable plastic pin lock

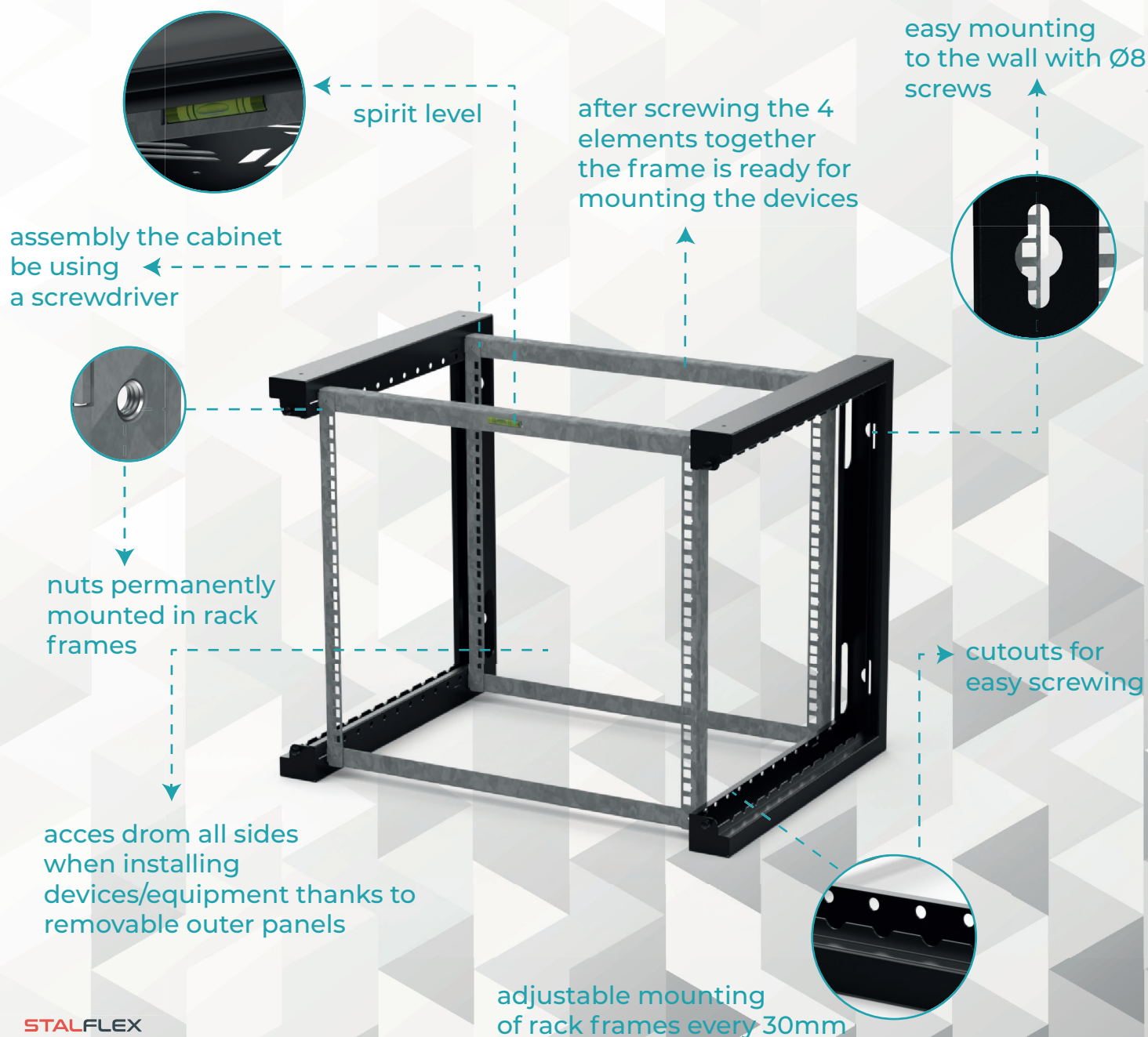
door assembly right/left side using a hinge spring

19" RACK CABINET 450MM PROFESSIONAL

SYMBOL	NAME	max. depth of the device 400mm
P-RC19-4U-450GB	Cabinet RACK Professional 19" 4U 450mm , glass, black	
P-RC19-4U-450GG	Cabinet RACK Professional 19" 4U 450mm , glass, grey	
P-RC19-6U-450GB	Cabinet RACK Professional 19" 6U 450mm , glass, black	
P-RC19-6U-450GG	Cabinet RACK Professional 19" 6U 450mm , glass, grey	
P-RC19-9U-450GB	Cabinet RACK Professional 19" 9U 450mm , glass, black	
P-RC19-9U-450GG	Cabinet RACK Professional 19" 9U 450mm , glass, grey	
P-RC19-12U-450GB	Cabinet RACK Professional 19" 12U 450mm , glass, black	
P-RC19-12U-450GG	Cabinet RACK Professional 19" 12U 450mm , glass, grey	

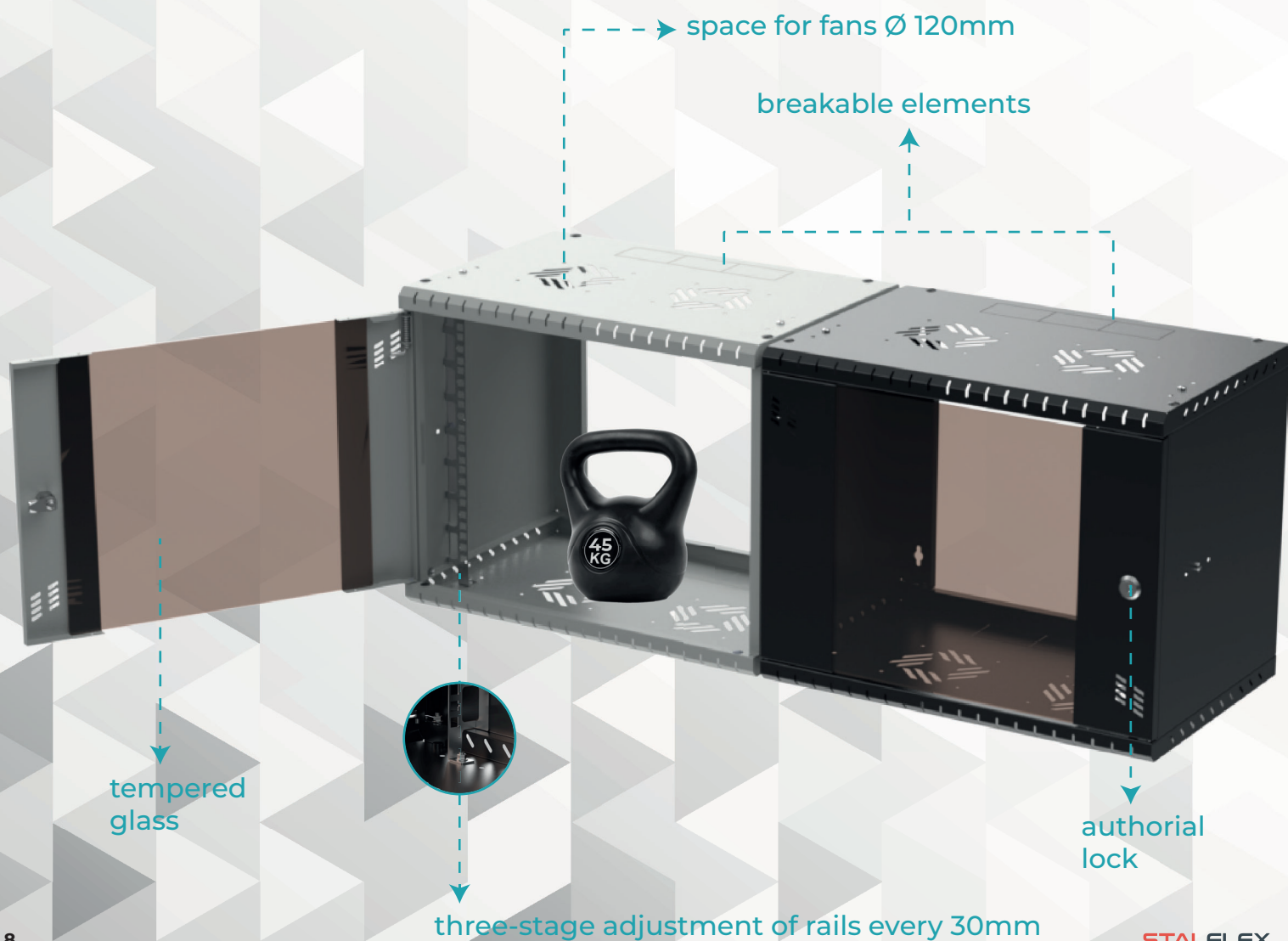
19" RACK CABINET 600MM PROFESSIONAL

SYMBOL	NAME	max. depth of the device 550mm
P-RC19-9U-600GB	Cabinet RACK Professional 19" 9U 600mm , glass, black	
P-RC19-9U-600GG	Cabinet RACK Professional 19" 9U 600mm , glass, grey	
P-RC19-12U-600GB	Cabinet RACK Professional 19" 12U 600mm , glass, black	
P-RC19-12U-600GG	Cabinet RACK Professional 19" 12U 600mm , glass, grey	
P-RC19-15U-600GB	Cabinet RACK Professional 19" 15U 600mm , glass, black	
P-RC19-15U-600GG	Cabinet RACK Professional 19" 15U 600mm , glass, grey	



TECHNICAL PARAMETERS:

- DC01 powder coated steel
- breakable elements on the top and bottom of the cabinet
- zipper of a higher standard
- possibility of mounting up to four fans - 2 x at the top and 2 x at the bottom of the cabinet (screw spacing: 105x105 mm; \varnothing 120mm)
- additional ventilation elements
- glazed front door with the option of mounting on the left or right side
- adjustment of three-stage RACK mounting every 30 mm
- wall mounting with holes for easy suspension and tightening of the frame
- RACK standard 10"/19"
- height: 4U, 6U, 9U, 12U
- depth: 300, 350, 400 mm
- max. load 45kg
- maximum depth of the mountable device:
300 mm = 220 mm; 350 mm = 270 mm; 400 mm = 320 mm
- colors:



10" CABINET RACK 300MM STANDARD

SYMBOL	NAME	max. depth of the device 220mm
S-RC10-4U-300GB	Cabinet RACK Standard 10" 4U 300mm, glass, black	
S-RC10-4U-300GG	Cabinet RACK Standard 10" 4U 300mm, glass, grey	
S-RC10-6U-300GB	Cabinet RACK Standard 10" 6U 300mm, glass, black	
S-RC10-6U-300GG	Cabinet RACK Standard 10" 6U 300mm, glass, grey	
S-RC10-9U-300GB	Cabinet RACK Standard 10" 9U 300mm, glass, black	
S-RC10-9U-300GG	Cabinet RACK Standard 10" 9U 300mm, glass, grey	
S-RC10-12U-300GB	Cabinet RACK Standard 10" 12U 300mm, glass, black	
S-RC10-12U-300GG	Cabinet RACK Standard 10" 12U 300mm, glass, grey	

19" CABINET RACK 350MM STANDARD

SYMBOL	NAME	max. depth of the device 270mm
S-RC19-4U-350GB	Cabinet RACK Standard 19" 4U 350mm, glass, black	
S-RC19-4U-350GG	Cabinet RACK Standard 19" 4U 350mm, glass, grey	
S-RC19-6U-350GB	Cabinet RACK Standard 19" 6U 350mm, glass, black	
S-RC19-6U-350GG	Cabinet RACK Standard 19" 6U 350mm, glass, grey	

19" CABINET RACK 400MM STANDARD

SYMBOL	NAME	max. depth of the device 320mm
S-RC19-9U-400GB	Cabinet RACK Standard 19" 9U 400mm, glass, black	
S-RC19-9U-400GG	Cabinet RACK Standard 19" 9U 400mm, glass, grey	

additional
ventilation

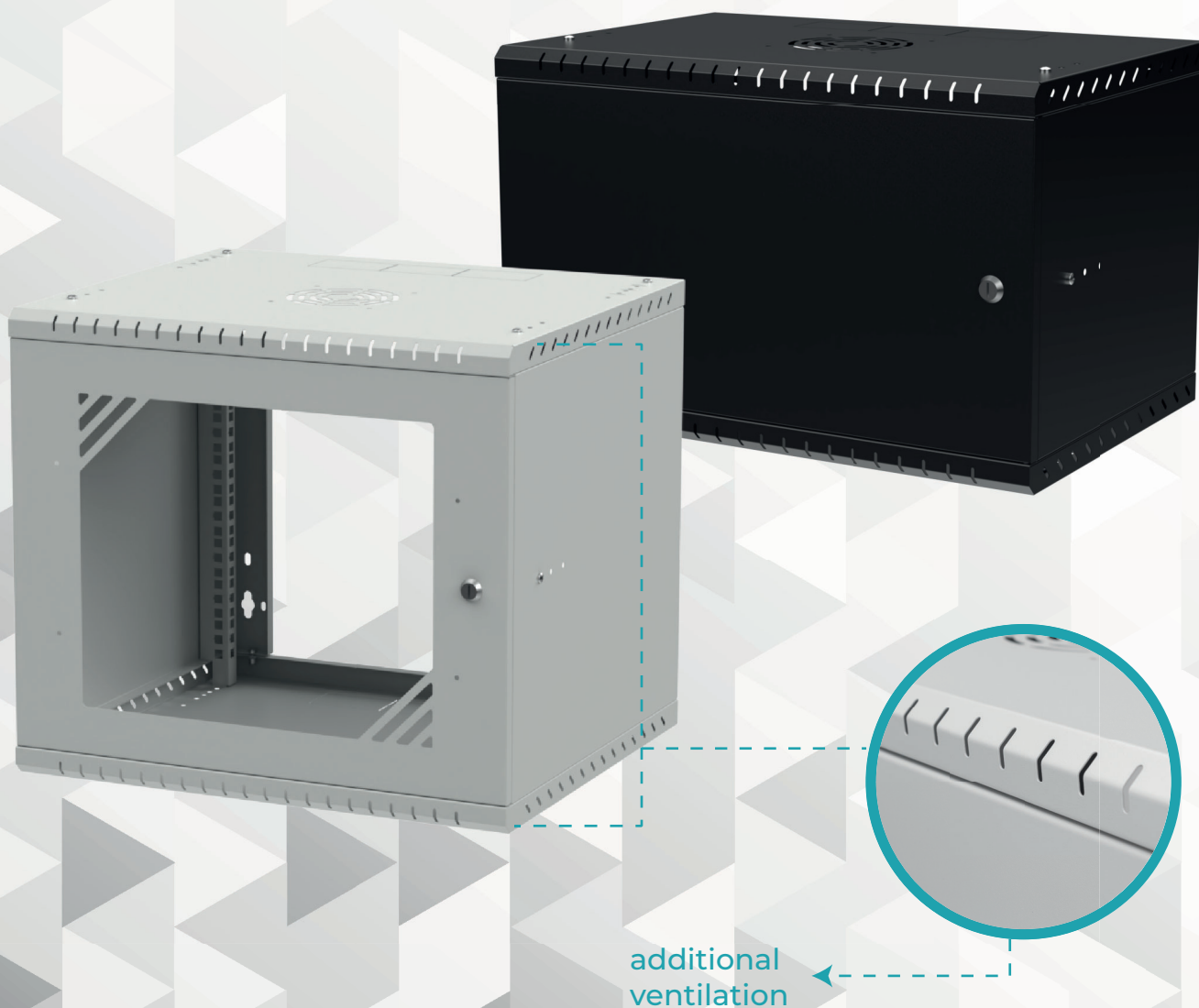


door installation
right/left side
by means of a hinge
spring



TECHNICAL PARAMETERS:

- DC01 steel, protected against corrosion and powder coated
- cable glands in the upper and lower part of the cabinet
(dimension of single cap: 80 x 50 mm)
- numerous ventilation openings
- possibility of mounting up to two fans - 1 x at the top and 1 x at the bottom of the cabinet
(screw spacing: 105 x 105 mm; $\varnothing 120\text{mm}$)
- front door: glass / metal;
- adjustment of front rack mounting (every 30 mm)
- wall mounting
- assembly kit with instructions included
- (lock with 2 keys, set of screws)
- RACK standard: 10"/19"
- height: (10") 4U, 6U, 9U; (19") 4U, 6U, 9U, 12U
- depth: (10") 280, 300 mm; (19") 350, 450, 600 mm;
- colors:



10" RACK CABINETS 300mm

SYMBOL	NAME
RC10-4U-300GG	Cabinet RACK 10" 4U 300mm, glass, grey
RC10-4U-300GB	Cabinet RACK 10" 4U 300mm, glass, black
RC10-6U-300MG	Cabinet RACK 10" 6U 300mm, metal, grey
RC10-6U-300GG	Cabinet RACK 10" 6U 300mm, glass, grey
RC10-6U-300MB	Cabinet RACK 10" 6U 300mm, metal, black
RC10-6U-300GB	Cabinet RACK 10" 6U 300mm, glass, black
RC10-9U-300GG	Cabinet RACK 10" 9U 300mm, glass, grey
RC10-9U-300GB	Cabinet RACK 10" 9U 300mm, glass, black

19" RACK CABINETS 350mm

SYMBOL	NAME
RC19-4U-350MG	Cabinet RACK 19" 4U 350mm, metal, grey
RC19-4U-350GG	Cabinet RACK 19" 4U 350mm, glass, grey
RC19-4U-350MB	Cabinet RACK 19" 4U 350mm, metal, black
RC19-4U-350GB	Cabinet RACK 19" 4U 350mm, glass, black
RC19-6U-350MG	Cabinet RACK 19" 6U 350mm, metal, grey
RC19-6U-350GG	Cabinet RACK 19" 6U 350mm, glass, grey
RC19-6U-350MB	Cabinet RACK 19" 6U 350mm, metal, black
RC19-6U-350GB	Cabinet RACK 19" 6U 350mm, glass, black

19" RACK CABINETS 450mm



SYMBOL	NAME
RC19-4U-450GG	Cabinet RACK 19" 4U 450mm, glass, grey
RC19-4U-450GB	Cabinet RACK 19" 4U 450mm, glass, black
RC19-6U-450GG	Cabinet RACK 19" 6U 450mm, glass, grey
RC19-6U-450GB	Cabinet RACK 19" 6U 450mm, glass, black
RC19-9U-450GG	Cabinet RACK 19" 9U 450mm, glass, grey
RC19-9U-450GB	Cabinet RACK 19" 9U 450mm, glass, black
RC19-12U-450GG	Cabinet RACK 19" 12U 450mm, glass, grey
RC19-12U-450GB	Cabinet RACK 19" 12U 450mm, glass, black

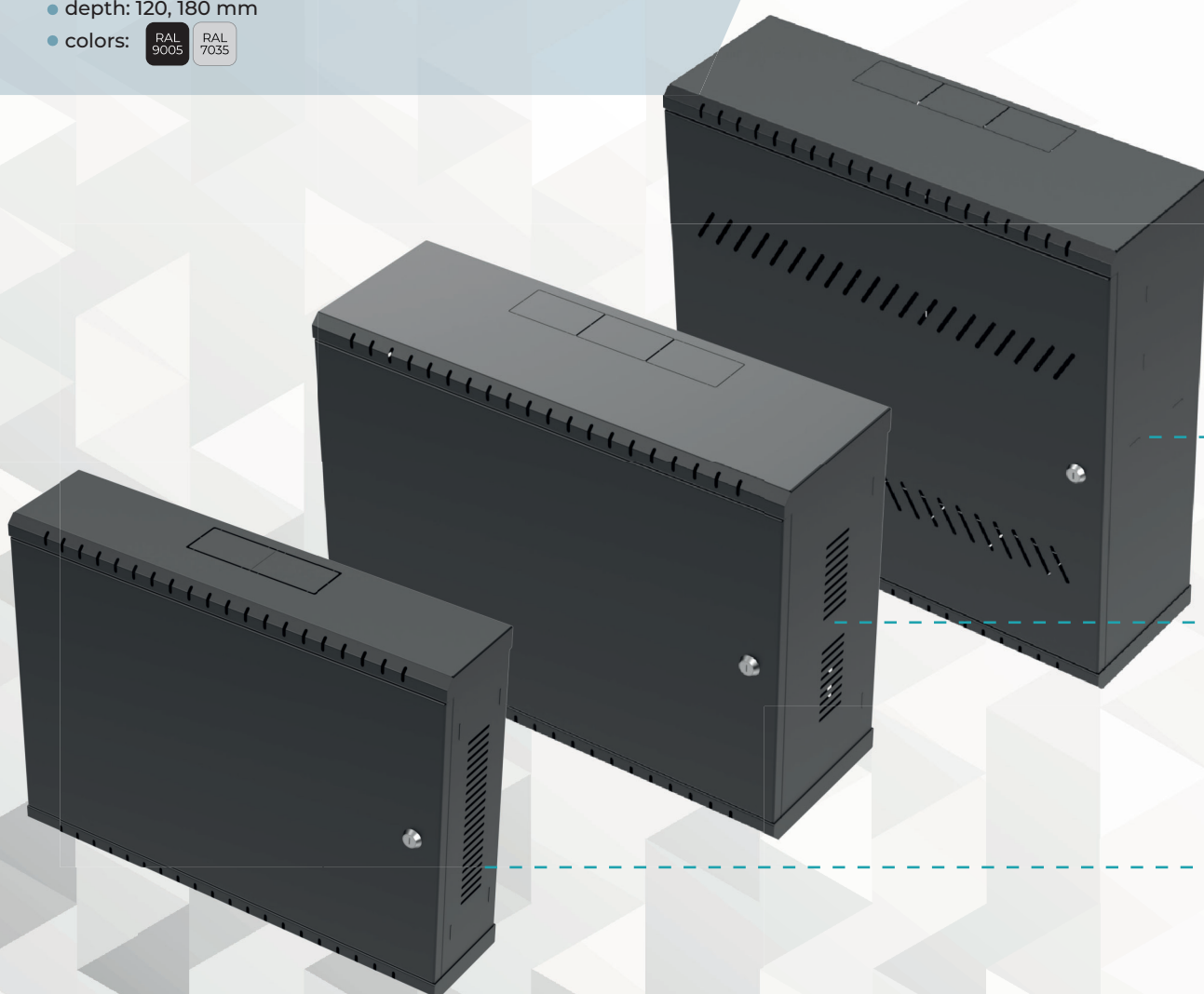
19" RACK CABINETS 600mm

SYMBOL	NAME
RC19-9U-600GG	Cabinet RACK 19" 9U 600mm, glass, grey
RC19-9U-600GB	Cabinet RACK 19" 9U 600mm, glass, black
RC19-12U-600GG	Cabinet RACK 19" 12U 600mm, glass, grey
RC19-12U-600GB	Cabinet RACK 19" 12U 600mm, glass, black

Hanging RACK Cabinets

TECHNICAL PARAMETERS:

- DC01 steel, protected against corrosion and powder coated
- cable glands at the top and bottom of the cabinet
(dimension of single cap: 80 x 50 mm)
- numerous ventilation openings
- front door: metal
- RACK mounting adjustment in almost the entire range of cabinet height
- wall mounting
- welded cabinet, ready to hang
- lock with two keys included
- RACK standard: 19"
- height: 2U, 3U, 3+4U
- depth: 120, 180 mm
- colors:  





19" CABINET RACK

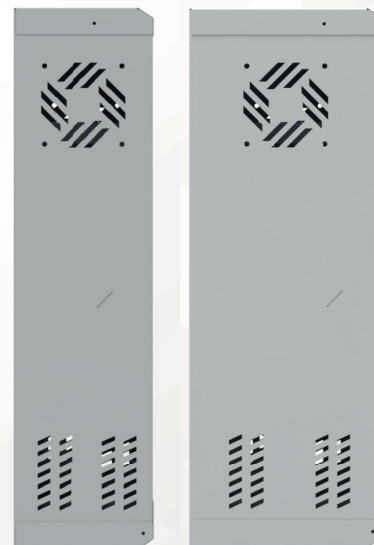
SYMBOL

NAME

RCA19-2U-120G-T	Cabinet RACK 19" 2U 120mm, grey
RCA19-2U-120B-T	Cabinet RACK 19" 2U 120mm, black
RCA19-3U-180G-T	Cabinet RACK 19" 3U 180mm, grey
RCA19-3U-180B-T	Cabinet RACK 19" 3U 180mm, black
RCA19-3+4U-180G-T	Cabinet RACK 19" 3+4U 180mm, grey
RCA19-3+4U-180B-T	Cabinet RACK 19" 3+4U 180mm, black

TECHNICAL PARAMETERS:

- DC01 steel, protected against corrosion and powder coated
- cable glands in the rear wall of the cabinet (dimension of single cap: 80 x 50 mm)
- ventilation holes on the sides of the housing
- possibility of mounting a fan 80 x 80 mm (screw spacing 72 x 72 mm)
- front door: metal opening at an angle of 90° from top to bottom
- mounted actuators slowing the opening of the door
- welded housing, ready to hang
- wall mounting
- lock with two keys included
- RACK standard: 19"
- height: 2U, 3U
- depth: 130, 180 mm
- colors:  



19" RACK CASES

SYMBOL	NAME
CR19-2U-130-W	RACK Cases 19" 2U 130mm , white
CR19-2U-130-B	RACK Cases 19" 2U 130mm , black
CR19-2U-130-G	RACK Cases 19" 2U 130mm , grey
CR19-3U-180-W	RACK Cases 19" 3U 180mm , white
CR19-3U-180-B	RACK Cases 19" 3U 180mm , black
CR19-3U-180-G	RACK Cases 19" 3U 180mm , grey



RACK SHELVES 10" 19"

Fixed shelves Professional	16
Fixed shelves Standard	17
Adjustable shelves Professional	18
Adjustable shelves Standard	19
Retractable shelves	20

RACK SHELVES 10" 19"

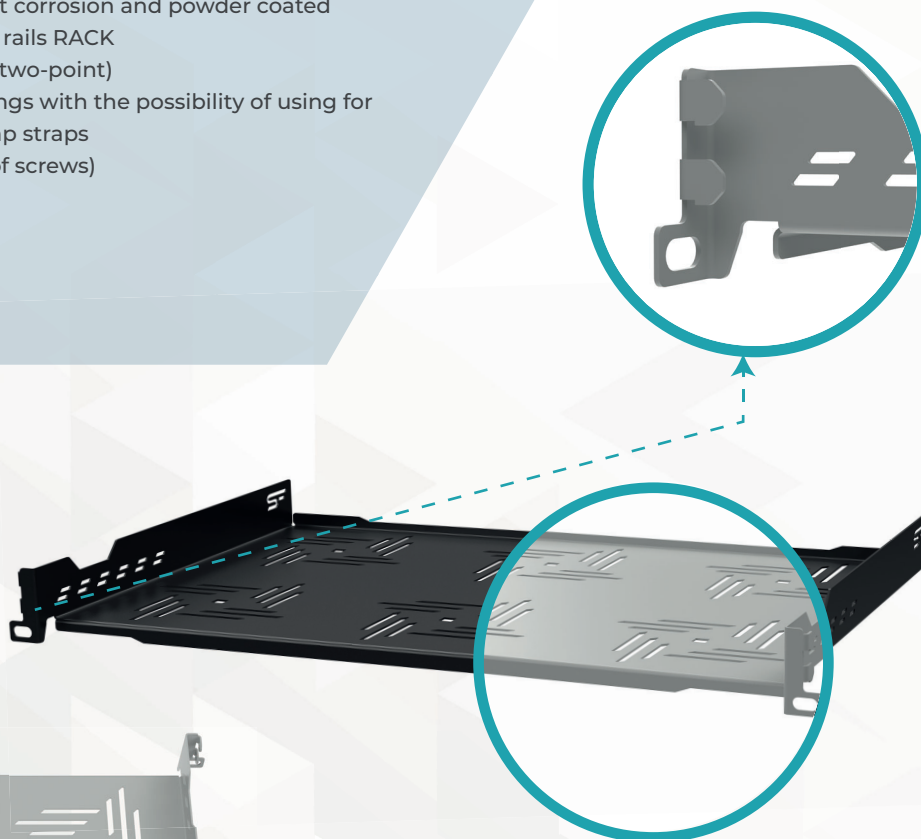
Fixed shelves Professional

TECHNICAL PARAMETERS:

- DC01 steel, protected against corrosion and powder coated
- six-point mounting for front rails RACK (hooks - four-point; screws - two-point)
- numerous ventilation openings with the possibility of using for mounting devices with clamp straps
- mounting kit included (set of screws)
- RACK standard: 19"
- height: 1U
- depth: 200, 250, 300 mm;
- colors:

RAL
9005

RAL
7035



**ASSEMBLY KIT
INCLUDED**

19" FIXED SHELVES

SYMBOL	NAME
B-RSF19-1U-200G	Fixed shelves 19" 1U 200mm, grey
B-RSF19-1U-200B	Fixed shelves 19" 1U 200mm, black
B-RSF19-1U-250G	Fixed shelves 19" 1U 250mm, grey
B-RSF19-1U-250B	Fixed shelves 19" 1U 250mm, black
B-RSF19-1U-300G	Fixed shelves 19" 1U 300mm, grey
B-RSF19-1U-300B	Fixed shelves 19" 1U 300mm, black

Fixed shelves Standard

TECHNICAL PARAMETERS:

- DC01 steel, protected against corrosion and powder coated
- four-point mounting for front rails RACK
- numerous ventilation openings with the possibility of using for mounting devices with clamp straps
- mounting kit included (set of screws)
- RACK standard: 10"/19"
- height: 1U
- depth: (10") 150 mm; (19") 170, 250, 270, 300, 350, 400 mm
- colors:



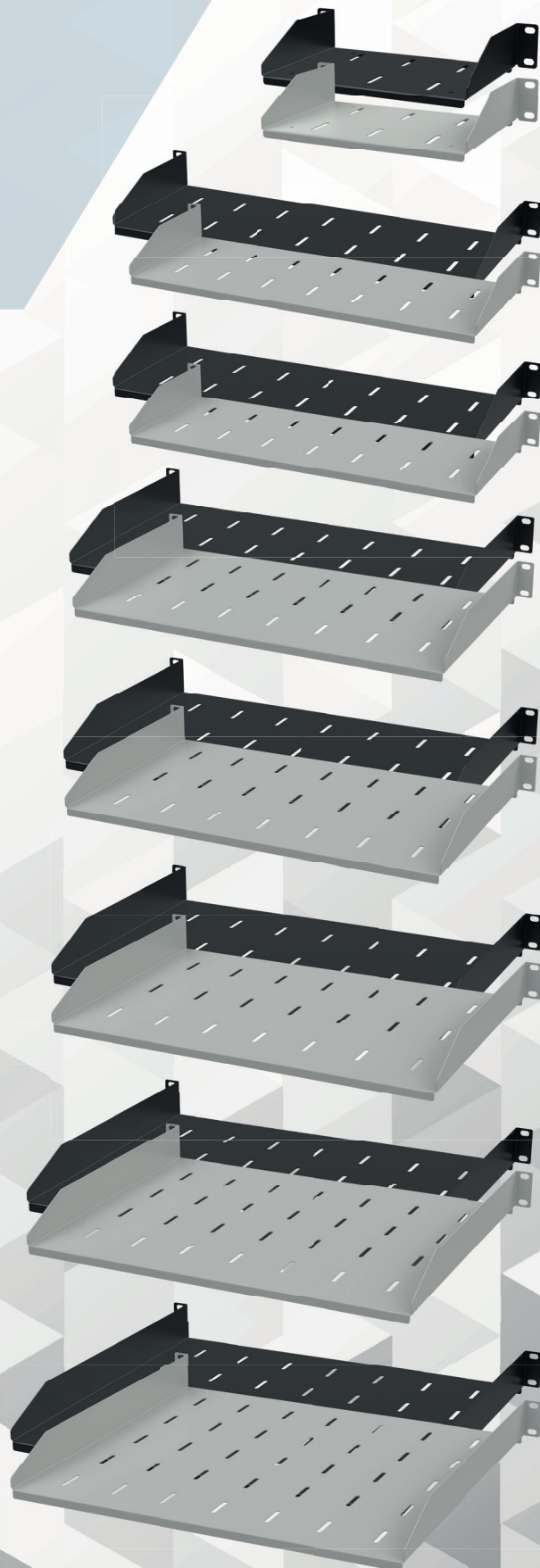
**ASSEMBLY KIT
INCLUDED**

10" FIXED SHELVES

SYMBOL	NAME
RSF10-1U-150G	Fixed shelf 10" 1U 150mm , grey
RSF10-1U-150B	Fixed shelf 10" 1U 150mm , black

19" FIXED SHELVES

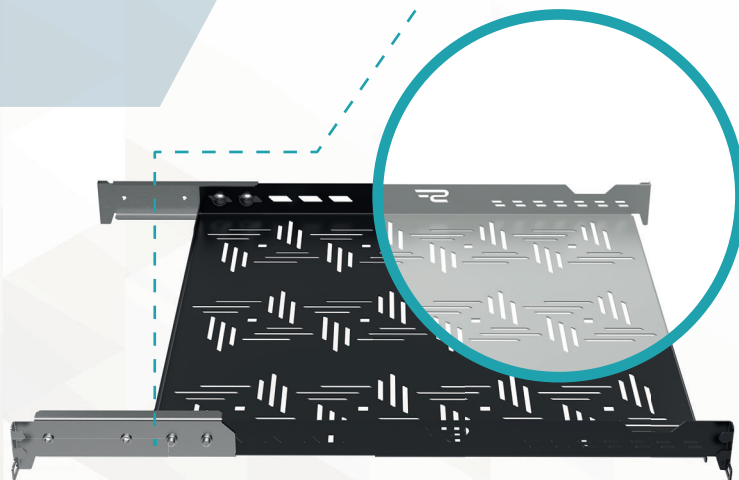
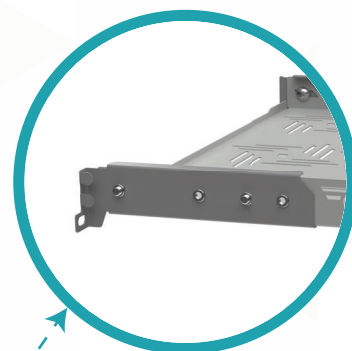
SYMBOL	NAME
RSF19-1U-170G	Fixed shelf 19" 1U 170mm , grey
RSF19-1U-170B	Fixed shelf 19" 1U 170mm , black
RSF19-1U-250G	Fixed shelf 19" 1U 250mm , grey
RSF19-1U-250B	Fixed shelf 19" 1U 250mm , black
RSF19-1U-270G	Fixed shelf 19" 1U 270mm , grey
RSF19-1U-270B	Fixed shelf 19" 1U 270mm , black
RSF19-1U-300G	Fixed shelf 19" 1U 300mm , grey
RSF19-1U-300B	Fixed shelf 19" 1U 300mm , black
RSF19-1U-350G	Fixed shelf 19" 1U 350mm , grey
RSF19-1U-350B	Fixed shelf 19" 1U 350mm , black
RSF19-1U-400G	Fixed shelf 19" 1U 400mm , grey
RSF19-1U-400B	Fixed shelf 19" 1U 400mm , black



Adjustable shelves Professional

TECHNICAL PARAMETERS:

- DC01 steel, protected against corrosion and powder coated
- six-point mounting for front rails RACK (hooks - four-point; screws - two-point)
- numerous ventilation openings with the possibility of using for mounting devices with clamp straps
- mounting kit included (set of screws)
- RACK standard: 19"
- height: 1U
- depth: 350, 450, 550, 650 mm;
- colors: RAL 9005 RAL 7035



thoughtful design
enabling installation of RACK devices
on the entire working surface, and
facilitating ventilation



**ASSEMBLY KIT
INCLUDED**

19" ADJUSTABLE SHELVES

SYMBOL	NAME	SCOPE OF REGULATION
B-RSA19-1U-350G	Adjustable shelf 19" 1U 350mm, grey	350 - 480 mm
B-RSA19-1U-350B	Adjustable shelf 19" 1U 350mm, black	350 - 480 mm
B-RSA19-1U-450G	Adjustable shelf 19" 1U 450mm, grey	450 - 580 mm
B-RSA19-1U-450B	Adjustable shelf 19" 1U 450mm, black	450 - 580 mm
B-RSA19-1U-550G	Adjustable shelf 19" 1U 550mm, grey	550 - 680 mm
B-RSA19-1U-550B	Adjustable shelf 19" 1U 550mm, black	550 - 680 mm
B-RSA19-1U-650G	Adjustable shelf 19" 1U 650mm, grey	650 - 780 mm
B-RSA19-1U-650B	Adjustable shelf 19" 1U 650mm, black	650 - 780 mm

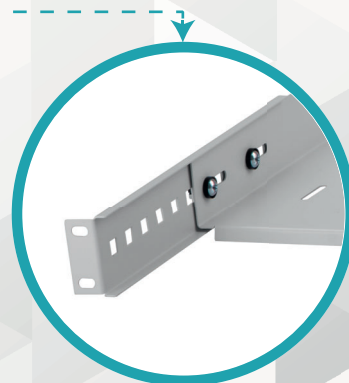
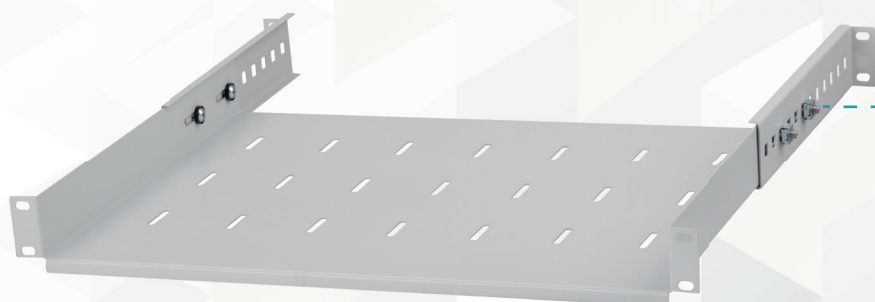
Adjustable Shelves Standard

TECHNICAL PARAMETERS:

- DC01 steel, protected against corrosion and powder coated
- four-point mounting for front and rear RACK rails
- numerous ventilation openings with the possibility of using for mounting devices with clamp straps
- mounting kit included (set of screws)
- adjustable depth
- RACK standard: 19"
- height: 1U
- depth: 250, 350, 450, 550, 650, 750mm
- colors:



**ASSEMBLY KIT
INCLUDED**



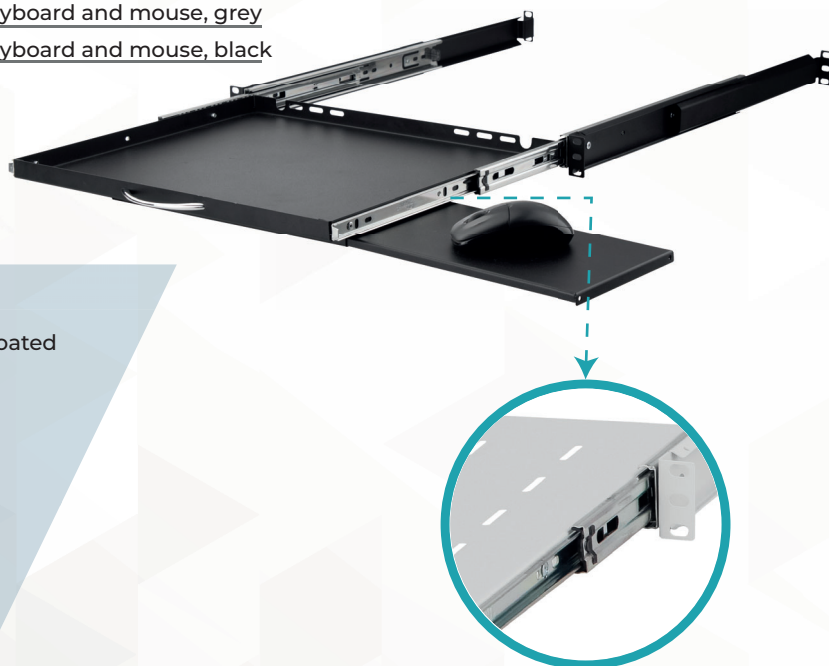
19" ADJUSTABLE SHELVES

SYMBOL	NAME	SCOPE OF REGULATION
RSA19-1U-250G	Adjustable shelf 19" 1U 250mm , grey	250 - 410 mm
RSA19-1U-250B	Adjustable shelf 19" 1U 250mm , black	250 - 410 mm
RSA19-1U-350G	Adjustable shelf 19" 1U 350mm , grey	350 - 510 mm
RSA19-1U-350B	Adjustable shelf 19" 1U 350mm , black	350 - 510 mm
RSA19-1U-450G	Adjustable shelf 19" 1U 450mm , grey	450 - 610 mm
RSA19-1U-450B	Adjustable shelf 19" 1U 450mm , black	450 - 610 mm
RSA19-1U-550G	Adjustable shelf 19" 1U 550mm , grey	550 - 710 mm
RSA19-1U-550B	Adjustable shelf 19" 1U 550mm , black	550 - 710 mm
RSA19-1U-650G	Adjustable shelf 19" 1U 650mm , grey	650 - 810 mm
RSA19-1U-650B	Adjustable shelf 19" 1U 650mm , black	650 - 810 mm
RSA19-1U-750G	Adjustable shelf 19" 1U 750mm , grey	750 - 910 mm
RSA19-1U-750B	Adjustable shelf 19" 1U 750mm , black	750 - 910 mm



Retractable shelves RACK

19" RETRACTABLE SHELF FOR KEYBOARD AND MOUSE



SYMBOL	NAME
RSR19-1U-350G-KM	Retractable shelf for keyboard and mouse, grey
RSR19-1U-350B-KM	Retractable shelf for keyboard and mouse, black



TECHNICAL PARAMETERS:

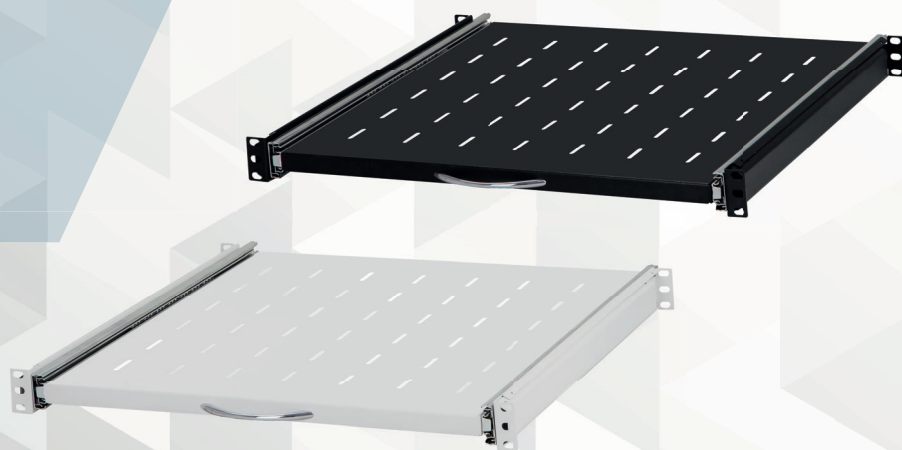
- DC01 steel, protected against corrosion and powder coated
- six-point mounting for front and rear RACK rails
- metal guides
- metal handle for easy pull-out
- mounting kit included (set of screws)
- RACK standard: 19"
- height: 1U
- depth: 350 mm
- colors:  

TECHNICAL PARAMETERS:

- DC01 steel, protected against corrosion and powder coated
- six-point mounting for front and rear RACK rails
- numerous ventilation openings with the possibility of using for mounting devices with clamp straps
- metal guides
- metal handle for easy pull-out
- mounting kit included (set of screws)
- RACK standard: 19"
- height: 1U
- depth: 350, 450, 550 mm
- colors:  



ASSEMBLY KIT INCLUDED



19" RETRACTABLE SHELVES

SYMBOL	NAME
RSR19-1U-350G	Retractable shelf 19" 1U 350mm, grey
RSR19-1U-350B	Retractable shelf 19" 1U 350mm, black
RSR19-1U-450G	Retractable shelf 19" 1U 450mm, grey
RSR19-1U-450B	Retractable shelf 19" 1U 450mm, black
RSR19-1U-550G	Retractable shelf 19" 1U 550mm, grey
RSR19-1U-550B	Retractable shelf 19" 1U 550mm, black



RACK ACCESSORIES 10" 19"

RACK drawers	23
Masks	24
LED Panel	25
Voltage distribution panel	26
Brush cable organisers	27
Organisers	28
Wall brackets RACK 19"	29
RACK Racks	30



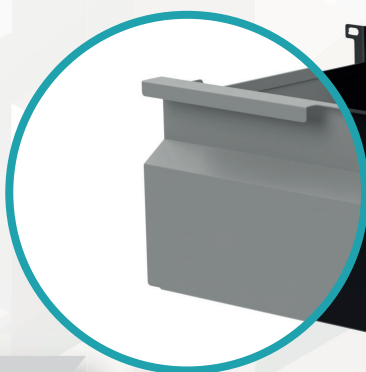
RACK drawers

TECHNICAL PARAMETERS:

- DC01 steel, protected against corrosion and powder coated
- cable glands at the back of the drawer
(dimension of single cap: 80 x 50 mm)
- metal slides with the possibility of removing the drawer
- four-point mounting
- assembly kit included
(lock with two keys, set of screws)
- RACK standard: 19"
- height: 1U, 2U, 3U, 4U
- depth: 1U, 2U = 270mm; 2U, 3U, 4U = 320mm
- colors:

RAL
9005

RAL
7035



**ASSEMBLY KIT
INCLUDED**

19" RACK DRAWERS

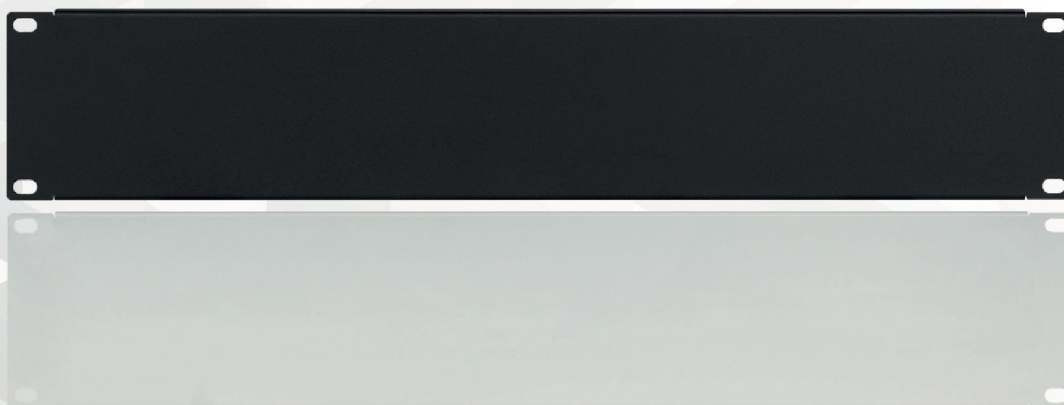
SYMBOL	NAME
RD19-1U-270G	RACK Drawer 19" 1U 270mm , grey
RD19-1U-270B	RACK Drawer 19" 1U 270mm , black
RD19-2U-270G	RACK Drawer 19" 2U 270mm , grey
RD19-2U-270B	RACK Drawer 19" 2U 270mm , black
RD19-2U-320G	RACK Drawer 19" 2U 320mm , grey
RD19-2U-320B	RACK Drawer 19" 2U 320mm , black
RD19-3U-320G	RACK Drawer 19" 3U 320mm , grey
RD19-3U-320B	RACK Drawer 19" 3U 320mm , black
RD19-4U-320G	RACK Drawer 19" 4U 320mm , grey
RD19-4U-320B	RACK Drawer 19" 4U 320mm , black

TECHNICAL PARAMETERS:

- DC01 steel, protected against corrosion and powder coated
- four-point mounting for front rails RACK
- RACK standard: 10"/19"
- height: (10") 1U; (19") 1U, 2U, 3U, 4U, 5U
- colors:

RAL
9005

RAL
7035





10" MASKS

SYMBOL	NAME
RP10-1U-G	Mask 10" 1U , grey
RP10-1U-B	Mask 10" 1U , black

19" MASKS

SYMBOL	NAME
RP19-1U-G	Mask 19" 1U , grey
RP19-1U-B	Mask 19" 1U , black
RP19-2U-G	Mask 19" 2U , grey
RP19-2U-B	Mask 19" 2U , black
RP19-3U-G	Mask 19" 3U , grey
RP19-3U-B	Mask 19" 3U , black
RP19-4U-G	Mask 19" 4U , grey
RP19-4U-B	Mask 19" 4U , black
RP19-5U-G	Mask 19" 5U , grey
RP19-5U-B	Mask 19" 5U , black

TECHNICAL PARAMETERS:

- made of cold rolled steel and plastic
- powder coated
- compatible with RACK standard
- assembly kit with instructions included
- dimensions: 495 x 85 x 55 mm
- LED specification: 6500K / 405lm (21 LEDs)
- colors:  



**ASSEMBLY KIT
INCLUDED**

19" LED PANEL

SYMBOL	NAME
B-RLF19-1U-B	LED panel 19", 1U, black
B-RLF19-1U-G	LED panel 19", 1U, grey

Voltage distribution panel

TECHNICAL PARAMETERS:

- DC01 steel, protected against corrosion and powder coated
- six-point mounting for RACK rails
- equipped with TS-35 rail and cover with 400 x 45.5 mm aperture
- maximum number of circuit breakers "S" - 22 pcs.
- 4 holes in the back for carrying cables
- mounting kit included (set of screws)
- RACK standard: 19"
- height: 3U
- colors:



19" VOLTAGE DISTRIBUTION PANEL

SYMBOL	NAME
VDPI9-3U-G	Voltage distribution panel 19" 3U, grey
VDPI9-3U-B	Voltage distribution panel 19" 3U, black



ASSEMBLY KIT INCLUDED

TECHNICAL PARAMETERS:

- DC01 steel, protected against corrosion and powder coated
- six-point mounting for RACK rails
- equipped with TS-35 rail and cover with 400 x 45.5 mm aperture
- maximum number of circuit breakers "S" - 24 pcs.
- 4 holes in the back for carrying cables
- additional rack for battery mounting (175 x 85 mm)
- mounting kit included (set of screws)
- RACK standard: 19"
- height: 3U
- colors:



- **deepened panel 24 x S**





19" VOLTAGE DISTRIBUTION PANEL - deepened

SYMBOL	NAME
VDPI9-3U-24XS-G	Voltage distribution panel 19" 3U 24xS, grey
VDPI9-3U-24XS-B	Voltage distribution panel 19" 3U 24xS, black

Brush cable organisers

TECHNICAL PARAMETERS:

- cold rolled electrolytic steel, powder coated
- brush protects against dust
- two rows of holes at the top and bottom of the panel for easy laying of cables regardless of their direction
- organiser holds cables up to 3 mm in diameter
- fixing cables to the tabs using clamp straps
- side hooks for RACK rails for stable and trouble-free installation
- reinforcement in the middle of the panel increasing its stability
- RACK standard: 19" and 10"
- height: 1U, 2U
- colors:  



10" BRUSH CABLE ORGANISERS

SYMBOL	NAME
BCO10-1U-B	Brush cable organiser 10" 1U , black
BCO10-1U-G	Brush cable organiser 10" 1U , grey
BCO10-2U-B	Brush cable organiser 10" 2U , black
BCO10-2U-G	Brush cable organiser 10" 2U , grey

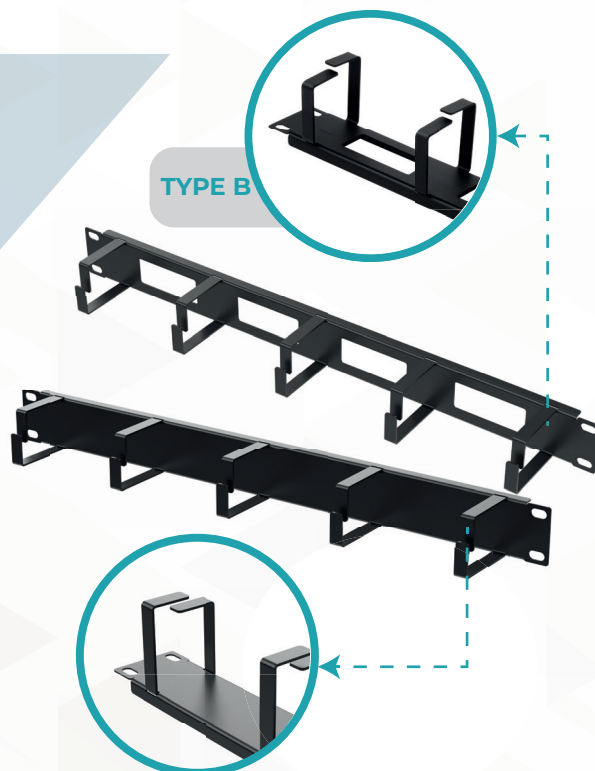
19" BRUSH CABLE ORGANISERS

SYMBOL	NAME
BCO19-1U-B	Brush cable organiser 19" 1U , black
BCO19-1U-G	Brush cable organiser 19" 1U , grey
BCO19-2U-B	Brush cable organiser 19" 2U , black
BCO19-2U-G	Brush cable organiser 19" 2U , grey

TECHNICAL PARAMETERS:

- DC01 steel, protected against corrosion and powder coated
- four-point mounting for RACK rails
- mounting kit included (set of screws)
- RACK standard: 19"
- height: 1U
- colors: RAL 9005 RAL 7035

TYPE B



19" RACK ORGANISERS

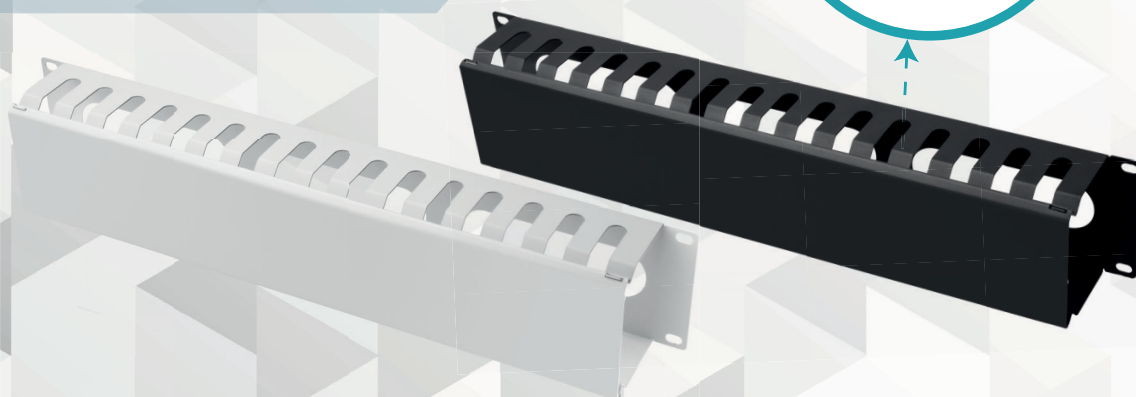
SYMBOL	NAME
CO19-1U-TB-G	Cable Organiser TYPE B 19" 1U, grey
CO19-1U-TB-B	Cable Organiser TYPE B 19" 1U, black
CO19-1U-G	Cable Organiser 19" 1U, grey
CO19-1U-B	Cable Organiser 19" 1U, black



ASSEMBLY KIT INCLUDED

TECHNICAL PARAMETERS:

- DC01 steel, protected against corrosion and powder coated
- four-point mounting for front rails RACK
- mounting kit included (set of screws)
- RACK standard: 19"
- height: 1U, 2U
- colors: RAL 9005 RAL 7035



19" RACK ORGANISERS

SYMBOL	NAME
CO19-1U-COMB-G	Cable Organiser 19" 1U, comb, grey
CO19-1U-COMB-B	Cable Organiser 19" 1U, comb, black
CO19-2U-COMB-G	Cable Organiser 19" 2U, comb, grey
CO19-2U-COMB-B	Cable Organiser 19" 2U, comb, black

RACK Wall Mounts

TECHNICAL PARAMETERS:

- DC01 steel, protected against corrosion and powder coated
- wall mounting
- mounting kit included (set of screws)
- RACK standard: 19"
- height: 2U, 3U, 4U, 6U
- colors:



19" WALL RACK HOLDERS

SYMBOL	NAME
WRH19-2U-330G	Wall RACK Holder 19" 2U 330mm, grey
WRH19-2U-330B	Wall RACK Holder 19" 2U 330mm, black
WRH19-3U-330G	Wall RACK Holder 19" 3U 330mm, grey
WRH19-3U-330B	Wall RACK Holder 19" 3U 330mm, black
WRH19-4U-330G	Wall RACK Holder 19" 4U 330mm, grey
WRH19-4U-330B	Wall RACK Holder 19" 4U 330mm, black
WRH19-6U-330G	Wall RACK Holder 19" 6U 330mm, grey
WRH19-6U-330B	Wall RACK Holder 19" 6U 330mm, black

RACK stands

TECHNICAL PARAMETERS:

- DC01 steel, protected against corrosion and powder coated
- mounting kit included (set of screws, anti-slip feet)
- RACK standard: 19"
- height: 2U, 3U, 4U, 6U
- colors:

RAL 9005



ASSEMBLY KIT INCLUDED



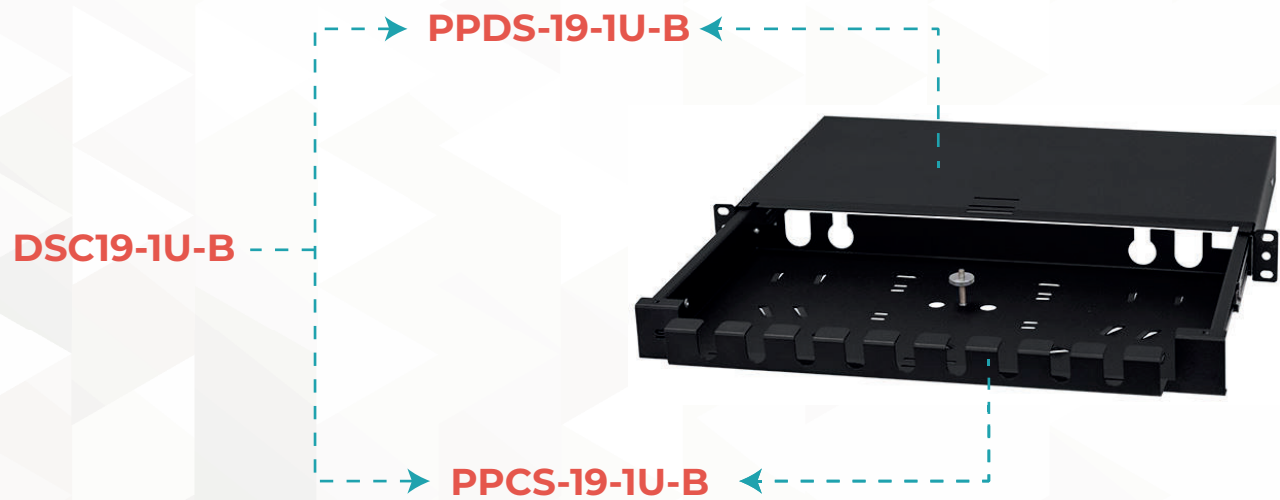
19" RACK STANDS

SYMBOL	NAME
STR19-2U-B	RACK stand 19" 2U, black
STR19-3U-B	RACK stand 19" 3U, black
STR19-4U-B	RACK stand 19" 4U, black
STR19-6U-B	RACK stand 19" 6U, black

FIBER OPTIC NETWORKS

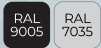
Fiber optic drawer	32
Fiber optic switch	32
Patch panels	33
Fixed switch	34
Patch modular panels	35

FIBER OPTIC NETWORKS



TECHNICAL PARAMTERES:

- DC01 steel, protected against corrosion and powder coated
- metal slides with full extension
- holes for mounting cable glands (10-14 mm)
- mounting to vertical rails RACK
- mounting kit included (set of screws)
- M5 threaded pin with knurled cap
- embossing for cable organization
- RACK standard: 19"
- height: 1U
- colors:



19" FIBER OPTIC SWITCHES - RETRACTABLE

SYMBOL	NAME
PPDS-19-1U-G	Fiber optic switch 19" 1U, grey, retractable
PPDS-19-1U-B	Fiber optic switch 19" 1U, black, retractable

19" FIBER OPTIC DRAWERS

SYMBOL	NAME
DFO19-1U-12S-G	Retractable fiber optic drawer with patch panel 19" 1U 12xSC simplex, grey
DFO19-1U-12S-B	Retractable fiber optic drawer with patch panel 19" 1U 12xSC simplex, black
DFO19-1U-24S-G	Retractable fiber optic drawer with patch panel 19" 1U 24xSC simplex, grey
DFO19-1U-24S-B	Retractable fiber optic drawer with patch panel 19" 1U 24xSC simplex, black
DFO19-1U-12D-G	Retractable fiber optic drawer with patch panel 19" 1U 12xSC duplex, grey
DFO19-1U-12D-B	Retractable fiber optic drawer with patch panel 19" 1U 12xSC duplex, black
DFO19-1U-24D-G	Retractable fiber optic drawer with patch panel 19" 1U 24xSC duplex, grey
DFO19-1U-24D-B	Retractable fiber optic drawer with patch panel 19" 1U 24xSC duplex, black
DSC19-1U-B	Cable storage drawer 19" 1U, black
DSC19-1U-G	Cable storage drawer 19" 1U, grey

Patch panels

19" PATCH PANELS

SYMBOL	NAME
P19-1U-12S-G	Patch panel 19" 1U 12xSC simplex, grey
P19-1U-12S-B	Patch panel 19" 1U 12xSC simplex, black
P19-1U-24S-G	Patch panel 19" 1U 24xSC simplex, grey
P19-1U-24S-B	Patch panel 19" 1U 24xSC simplex, black
P19-1U-12D-G	Patch panel 19" 1U 12xSC duplex, grey
P19-1U-12D-B	Patch panel 19" 1U 12xSC duplex, black
P19-1U-24D-G	Patch panel 19" 1U 24xSC duplex, grey
P19-1U-24D-B	Patch panel 19" 1U 24xSC duplex, black

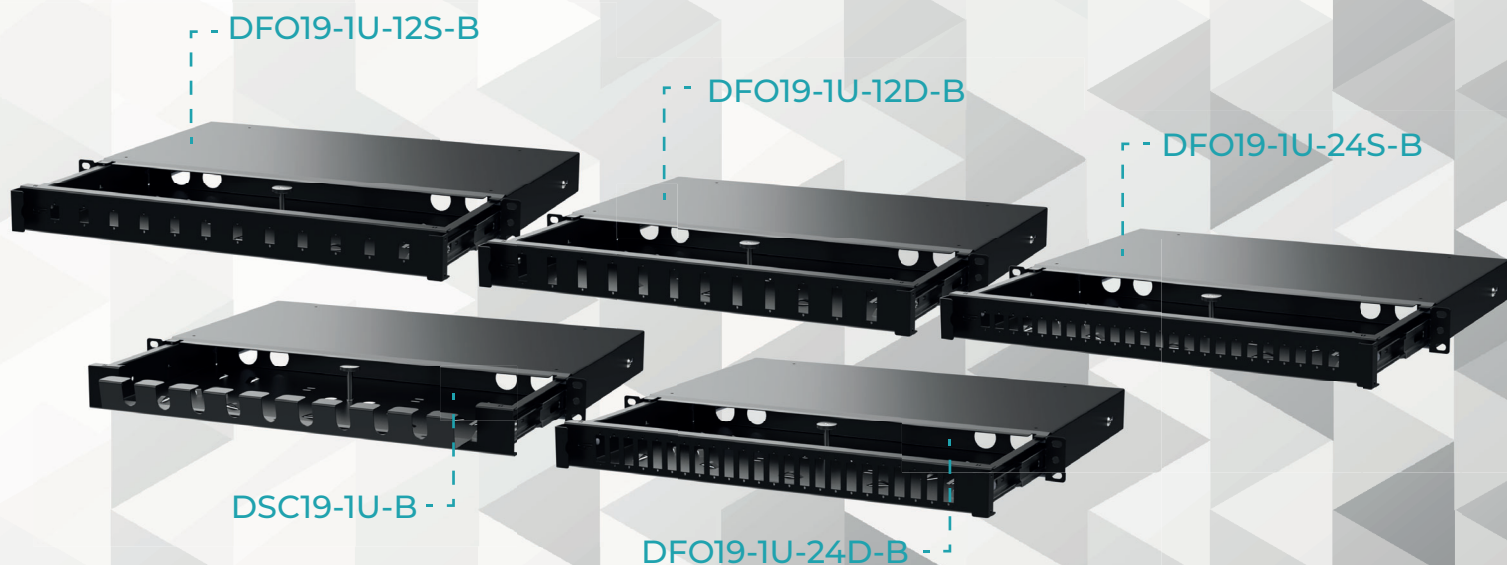
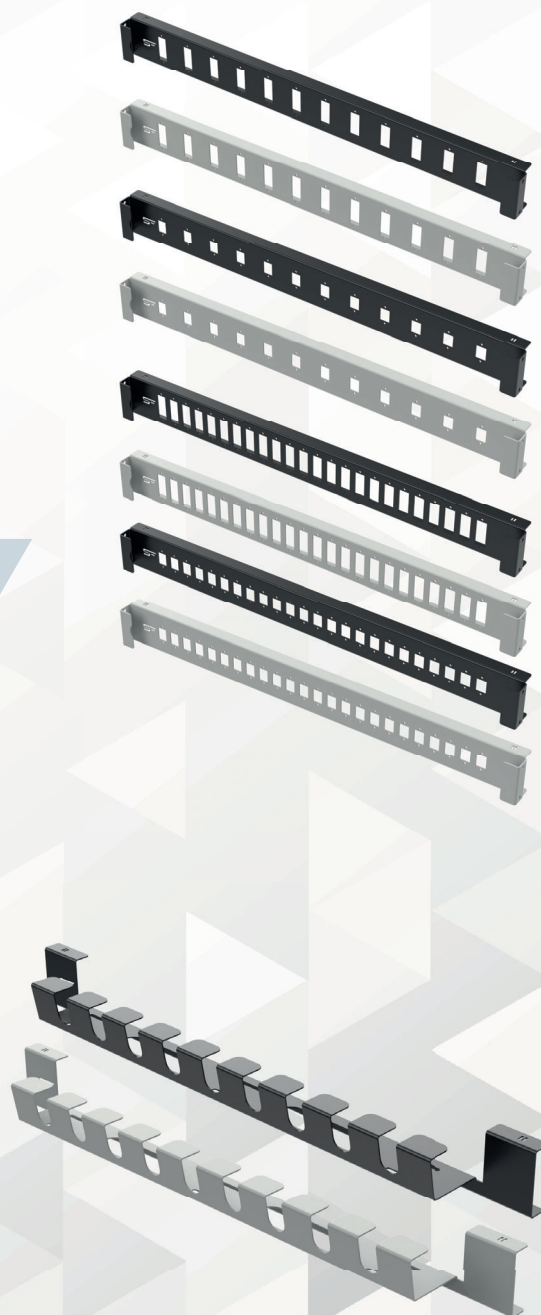
TECHNICAL PARAMETERS:

- DC01 steel, protected against corrosion and powder coated
- mounting to fiber optic drawer
- quick installation via latches
- holes adapted for SC simplex / duplex adapters
- RACK standard: 19"
- height: 1U, 2U
- number of simplex / duplex holes: 12/24; 24/48
- colors:



19" SPARE CABLE PANEL

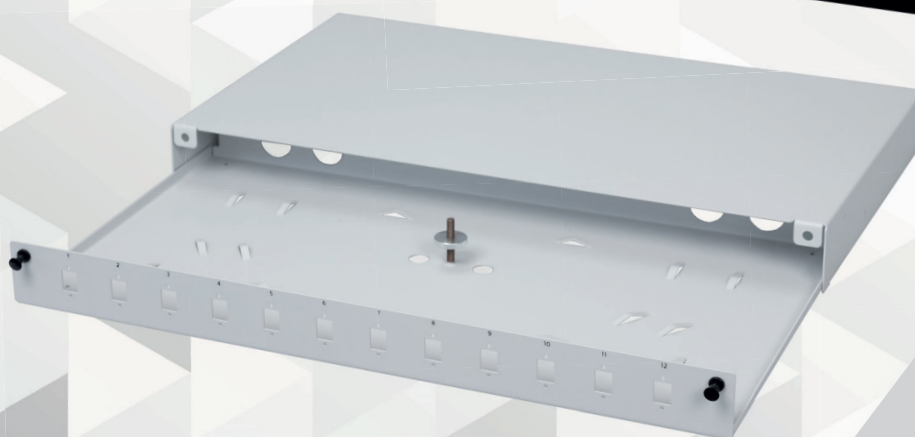
SYMBOL	NAME
PPCS-19-1U-G	Cable Stock Panel 19" 1U, grey
PPCS-19-1U-B	Cable Stock Panel 19" 1U, black



Fixed switches

TECHNICAL PARAMETERS:

- DC01 steel, protected against corrosion and powder coated
- holes for mounting cable glands (10-14 mm)
- mounting to vertical rails RACK
- mounting kit included (set of screws)
- M5 threaded pin with knurled cap
- embossing for cable organization
- RACK standard: 19"
- height: 1U
- colors:



**ASSEMBLY KIT
INCLUDED**

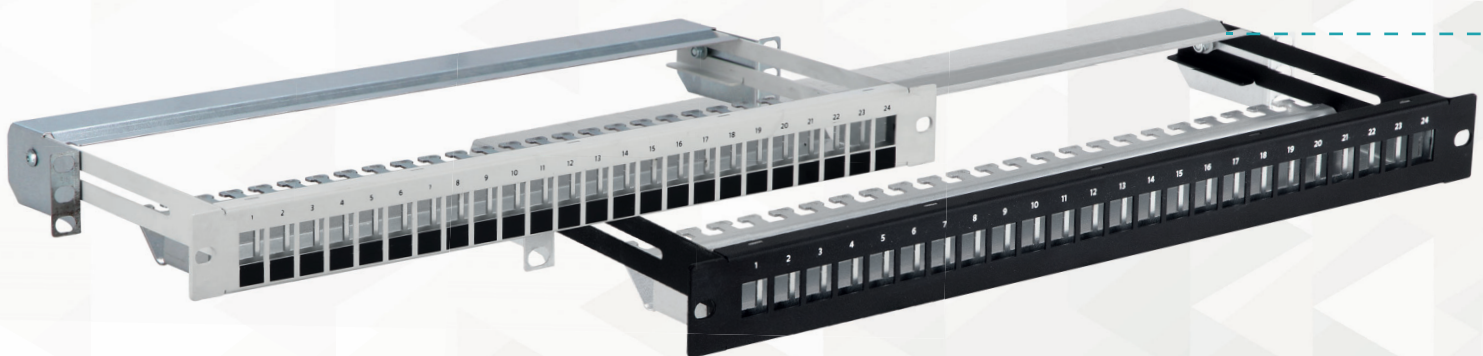
19" FIXED SWITCHES

SYMBOL	NAME
PPDF-19-1U-12SLX-G	Fixed switch 19" 1U 12xSC simplex, grey
PPDF-19-1U-12SLX-B	Fixed switch 19" 1U 12xSC simplex, black
PPDF-19-1U-24SLX-G	Fixed switch 19" 1U 24xSC simplex, grey
PPDF-19-1U-24SLX-B	Fixed switch 19" 1U 24xSC simplex, black
PPDF-19-1U-12DPX-G	Fixed switch 19" 1U 12xSC duplex, grey
PPDF-19-1U-12DPX-B	Fixed switch 19" 1U 12xSC duplex, black
PPDF-19-1U-24DPX-G	Fixed switch 19" 1U 24xSC duplex, grey
PPDF-19-1U-24DPX-B	Fixed switch 19" 1U 24xSC duplex, black


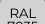
Patch panels modular 24 ports

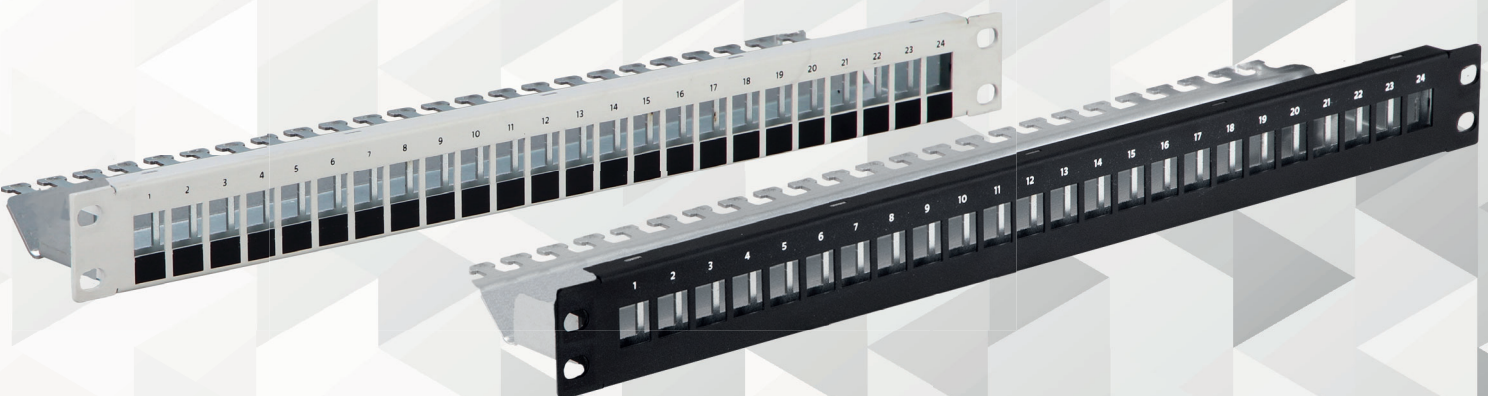
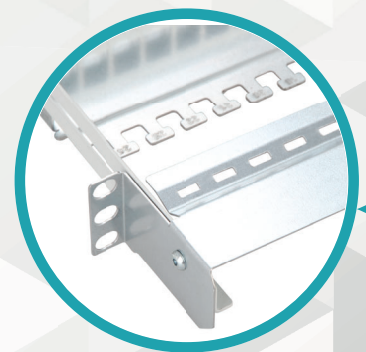
19" MODULAR RETRACTABLE PATCH PANELS

SYMBOL	NAME
PPM19-1U-24P-S-G	Patch panel modular 19" 1U 24 ports, retractable, grey
PPM19-1U-24P-S-B	Patch panel modular 19" 1U 24 ports, retractable, black



TECHNICAL PARAMETERS:

- DC01 steel, protected against corrosion and powder coated
- 24 free slots for mounting keystone modules
- port numbering and description fields
- support strip
- numbering on the comb for cable segregation
- mounting kit included (ground wire, set of screws)
- retractable patch panel (extractable option)
- RACK standard: 19"
- height: 1U
- colors:  



19" MODULAR PATCH PANELS

SYMBOL	NAME
PPM19-1U-24P-G	Modular patch panel 19" 1U 24 ports, grey
PPM19-1U-24P-B	Modular patch panel 19" 1U 24 ports, black



CABINETS

Surface mounted hydraulic manifold cabinets _____	38
Surface mounted hydraulic manifold cabinets DIN _____	38
Flush mounted hydraulic manifold cabinets _____	40
Flush mounted hydraulic manifold cabinets DIN _____	40
Waterproof electrical enclosures _____	42
Universal cases _____	44
TPR cases _____	45
OMP cases _____	46



CABINETS

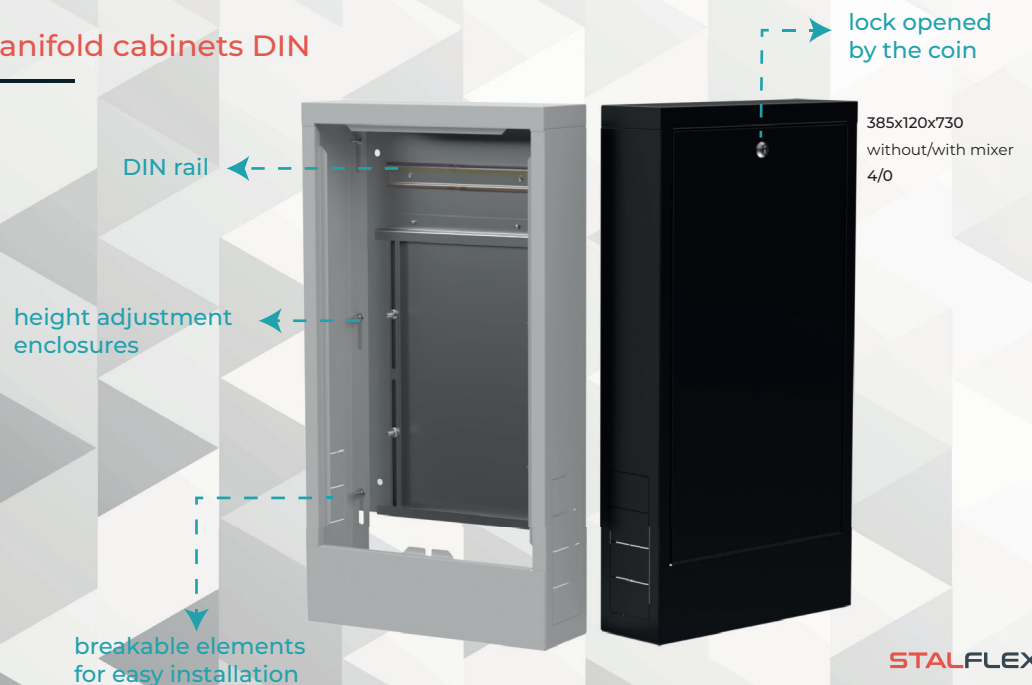
Surface mounted hydraulic manifold cabinets



TECHNICAL PARAMETERS:

- cold rolled galvanised and powder coated steel
- DIN rail (only for DIN rail model)
- lock opened with a coin or flat screwdriver
- cabinet height adjustment up to 43 mm (set on the ground)
- back panel made of 1.5 mm thick galvanized sheet metal
- possibility of later mounting the housing together with the door to the rear panel
- has mounting strips with four screws M6 x 20mm for screwing the distributor
- possibility of vertical adjustment by means of screws mounted in the strip
- horizontal adjustment of the mounting bar in any working area of the enclosure
- breakable elements
- a 115mm hollow space is left at the bottom of the rear panel
- indoor use
- surface construction
- number of manifold circuits without/with mixer: 4/0; 6/0; 8/4; 10/7; 12/8; 14/12; 16/14
- distributor housing height: 580 mm
- DIN rail enclosure height: 730 mm
- depth: 120 mm
- width: 385, 485, 615, 760, 845, 1015, 1125 mm
- colours: RAL 9005 RAL 9003

Surface mounted hydraulic manifold cabinets DIN



SURFACE MOUNTED HYDRAULIC MANIFOLD CABINETS

SYMBOL	NAME
SMMC-4/0-385B	Surface mounted hydraulic manifold cabinet 385mm , without/with mixer 4/0, black
SMMC-4/0-385W	Surface mounted hydraulic manifold cabinet 385mm , without/with mixer 4/0, white
SMMC-6/0-485B	Surface mounted hydraulic manifold cabinet 485mm , without/with mixer 6/0, black
SMMC-6/0-485W	Surface mounted hydraulic manifold cabinet 485mm , without/with mixer 6/0, white
SMMC-8/4-615B	Surface mounted hydraulic manifold cabinet 615mm , without/with mixer 8/4, black
SMMC-8/4-615W	Surface mounted hydraulic manifold cabinet 615mm , without/with mixer 8/4, white
SMMC-10/7-760B	Surface mounted hydraulic manifold cabinet 760mm , without/with mixer 10/7, black
SMMC-10/7-760W	Surface mounted hydraulic manifold cabinet 760mm , without/with mixer 10/7, white
SMMC-12/8-845B	Surface mounted hydraulic manifold cabinet 845mm , without/with mixer 12/8, black
SMMC-12/8-845W	Surface mounted hydraulic manifold cabinet 845mm , without/with mixer 12/8, white
SMMC-14/12-1015B	Surface mounted hydraulic manifold cabinet 1015mm , without/with mixer 14/12, black
SMMC-14/12-1015W	Surface mounted hydraulic manifold cabinet 1015mm , without/with mixer 14/12, white
SMMC-16/14-1125B	Surface mounted hydraulic manifold cabinet 1125mm , without/with mixer 16/14, black
SMMC-16/14-1125W	Surface mounted hydraulic manifold cabinet 1125mm , without/with mixer 16/14, white

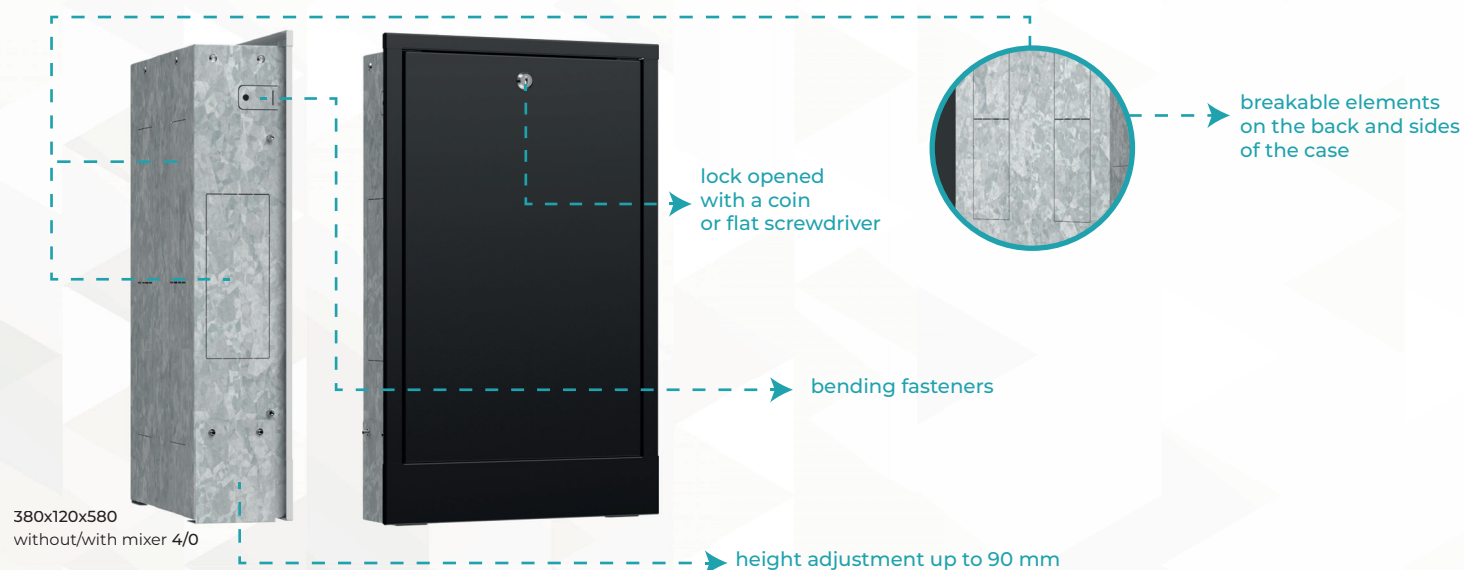


SURFACE MOUNTED HYDRAULIC MANIFOLD CABINETS DIN

SYMBOL	NAME
SMMC1-DIN-385-B	Surface mounted hydraulic manifold cabinet 385mm , without/with mixer 4/0, black
SMMC1-DIN-385-W	Surface mounted hydraulic manifold cabinet 385mm , without/with mixer 4/0, white
SMMC2-DIN-485-B	Surface mounted hydraulic manifold cabinet 485mm , without/with mixer 6/0, black
SMMC2-DIN-485-W	Surface mounted hydraulic manifold cabinet 485mm , without/with mixer 6/0, white
SMMC3-DIN-615-B	Surface mounted hydraulic manifold cabinet 615mm , without/with mixer 8/4, black
SMMC3-DIN-615-W	Surface mounted hydraulic manifold cabinet 615mm , without/with mixer 8/4, white
SMMC4-DIN-760-B	Surface mounted hydraulic manifold cabinet 760mm , without/with mixer 10/7, black
SMMC4-DIN-760-W	Surface mounted hydraulic manifold cabinet 760mm , without/with mixer 10/7, white
SMMC5-DIN-845-B	Surface mounted hydraulic manifold cabinet 845mm , without/with mixer 12/8, black
SMMC5-DIN-845-W	Surface mounted hydraulic manifold cabinet 845mm , without/with mixer 12/8, white
SMMC6-DIN-1015-B	Surface mounted hydraulic manifold cabinet 1015mm , without/with mixer 14/12, black
SMMC6-DIN-1015-W	Surface mounted hydraulic manifold cabinet 1015mm , without/with mixer 14/12, white
SMMC7-DIN-1125-B	Surface mounted hydraulic manifold cabinet 1125mm , without/with mixer 16/14, black
SMMC7-DIN-1125-W	Surface mounted hydraulic manifold cabinet 1125mm , without/with mixer 16/14, white



Flush mounted hydraulic manifold cabinets



TECHNICAL PARAMETERS:

- made of galvanised powder coated cold rolled steel
- **DIN rail (only for DIN rail model)**
- lock opened with a coin or flat screwdriver
- has mounting strips with four screws M6 x 20 mm for screwing the distributor
- possibility of vertical adjustment by means of screws mounted in the strip
- horizontal adjustment of the mounting bar in any working area of the enclosure
- back panel made of 1.5 mm thick galvanized sheet metal
- in key places has broken elements for inserting pipes
- mounting brackets for convenient mounting of the cabinet before plastering walls
- flush-mounted construction
- height for concealed manifold housing: 580 mm
- **height for DIN rail enclosure: 730 mm**
- depth: 120 mm
- width: 380, 480, 610, 760, 840, 1010, 1130 mm
- colours: **RAL 9005** **RAL 9003**

Flush mounted hydraulic manifold cabinets DIN



FLUSH MOUNTED HYDRAULIC MANIFOLD CABINETS

SYMBOL	NAME
FMMC-4/0-380-B	Flush mounted hydraulic manifold cabinet 380mm , without/with mixer 4/0, black
FMMC-4/0-380-W	Flush mounted hydraulic manifold cabinet 380mm , without/with mixer 4/0, white
FMMC-6/0-480-B	Flush mounted hydraulic manifold cabinet 480mm , without/with mixer 6/0, black
FMMC-6/0-480-W	Flush mounted hydraulic manifold cabinet 480mm , without/with mixer 6/0, white
FMMC-8/4-610-B	Flush mounted hydraulic manifold cabinet 610mm , without/with mixer 8/4, black
FMMC-8/4-610-W	Flush mounted hydraulic manifold cabinet 610mm , without/with mixer 8/4, white
FMMC-10/7-760-B	Flush mounted hydraulic manifold cabinet 760mm , without/with mixer 10/7, black
FMMC-10/7-760-W	Flush mounted hydraulic manifold cabinet 760mm , without/with mixer 10/7, white
FMMC-12/8-840-B	Flush mounted hydraulic manifold cabinet 840mm , without/with mixer 12/8, black
FMMC-12/8-840-W	Flush mounted hydraulic manifold cabinet 840mm , without/with mixer 12/8, white
FMMC-14/12-1010-B	Flush mounted hydraulic manifold cabinet 1010mm , without/with mixer 14/12, black
FMMC-14/12-1010-W	Flush mounted hydraulic manifold cabinet 1010mm , without/with mixer 14/12, white
FMMC-16/14-1130-B	Flush mounted hydraulic manifold cabinet 1130mm , without/with mixer 16/14, black
FMMC-16/14-1130-W	Flush mounted hydraulic manifold cabinet 1130mm , without/with mixer 16/14, white



380x120x580



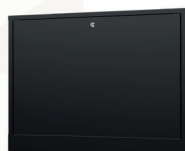
480x120x580



610x120x580



760x120x580



840x120x580



1010x120x580



1130x120x580

FLUSH MOUNTED HYDRAULIC MANIFOLD CABINETS DIN

SYMBOL	NAME
FMMC1-DIN-380-B	Flush mounted hydraulic manifold cabinet 380mm , without/with mixer 4/0, black
FMMC1-DIN-380-W	Flush mounted hydraulic manifold cabinet 380mm , without/with mixer 4/0, white
FMMC2-DIN-480-B	Flush mounted hydraulic manifold cabinet 480mm , without/with mixer 6/0, black
FMMC2-DIN-480-W	Flush mounted hydraulic manifold cabinet 480mm , without/with mixer 6/0, white
FMMC3-DIN-610-B	Flush mounted hydraulic manifold cabinet 610mm , without/with mixer 8/4, black
FMMC3-DIN-610-W	Flush mounted hydraulic manifold cabinet 610mm , without/with mixer 8/4, white
FMMC4-DIN-760-B	Flush mounted hydraulic manifold cabinet 760mm , without/with mixer 10/7, black
FMMC4-DIN-760-W	Flush mounted hydraulic manifold cabinet 760mm , without/with mixer 10/7, white
FMMC5-DIN-840-B	Flush mounted hydraulic manifold cabinet 840mm , without/with mixer 12/8, black
FMMC5-DIN-840-W	Flush mounted hydraulic manifold cabinet 840mm , without/with mixer 12/8, white
FMMC6-DIN-1010-B	Flush mounted hydraulic manifold cabinet 1010mm , without/with mixer 14/12, black
FMMC6-DIN-1010-W	Flush mounted hydraulic manifold cabinet 1010mm , without/with mixer 14/12, white
FMMC7-DIN-1130-B	Flush mounted hydraulic manifold cabinet 1130mm , without/with mixer 16/14, black
FMMC7-DIN-1130-W	Flush mounted hydraulic manifold cabinet 1130mm , without/with mixer 16/14, white



380x120x730



480x120x730



610x120x730



760x120x730



840x120x730



1010x120x730



1130x120x730

TECHNICAL PARAMETERS:

- DC01 steel, protected against corrosion and powder coated
- housing designed for self-assembly.
- assembly kit with instructions included (set of screws, lock with 2 keys)
- broken (perforated) cable glands at the top and bottom of the housing
- door can be mounted right/left sideways
- surface construction
- colors: RAL 9003



19" UNIVERSAL CASES

SYMBOL	NAME
MB-150X150X80-W	Universal case 150x150x80mm , white, welded
MB-200X200X120-W	Universal case 200x200x120mm , white, welded
MB-300X300X140-W	Universal case 300x300x140mm , white, welded
MB-400X400X160-SK-W	Universal case 400x400x160mm , white, twisted
MB-500X500X200-SK-W	Universal case 500x500x200mm , white, twisted

TECHNICAL PARAMETERS:

- DC01 steel, protected against corrosion and powder coated
- surface construction
- Welded housing, ready to hang
- lock with 2 keys included
- broken (perforated) cable glands at the top and bottom of the housing
- possibility of quick, complete disassembly of the door
- mounting plate included
- colors: RAL 9003



19" TPR CASES

SYMBOL	NAME
MB-TPR1M	TPR 1 case mini 240x150x50mm , white, riveting
MB-TPR1	TPR 1 case 240x150x100mm , white, riveting
MB-TPR2	TPR 2 case 200x300x120mm , white, riveting
MB-TPR3	TPR 3 case 300x300x100mm , white, riveting
MB-TPR4	TPR 4 case 400x400x140mm , white, welded
MB-TPR5	TPR 5 case 520x400x140mm , white, welded
MB-TPR5S	TPR 5S case 520x400x140mm , white, welded
MB-TPR6	TPR 6 case 540x420x180mm , white, welded
MB-TPR7	TPR 7 case 500x500x200mm , white, welded
MB-TPR8	TPR 8 case 700x500x200mm , white, welded

TECHNICAL PARAMETERS:

- DC01 steel, protected against corrosion and powder coated
- flush-mounted construction
- bending structural elements embedding the housing in the wall
- lock with 2 keys included
- broken/perforated cable glands at the top and bottom of the housing
- door can be mounted right/left sideways
- colors: RAL 9003



19" Flush-mounted metal case

SYMBOL	NAME
MB-OMP3	Flush-mounted metal case OMP-3 300x300x120mm
MB-OMP4	Flush-mounted metal case OMP-4 400x400x120mm
MB-OMP5	Flush-mounted metal case OMP-5 400x500x120mm

Camera holders

Post brackets for cameras	50
Corner mounts for cameras	51
Mini loco bracket	52



CAMERA HOLDERS

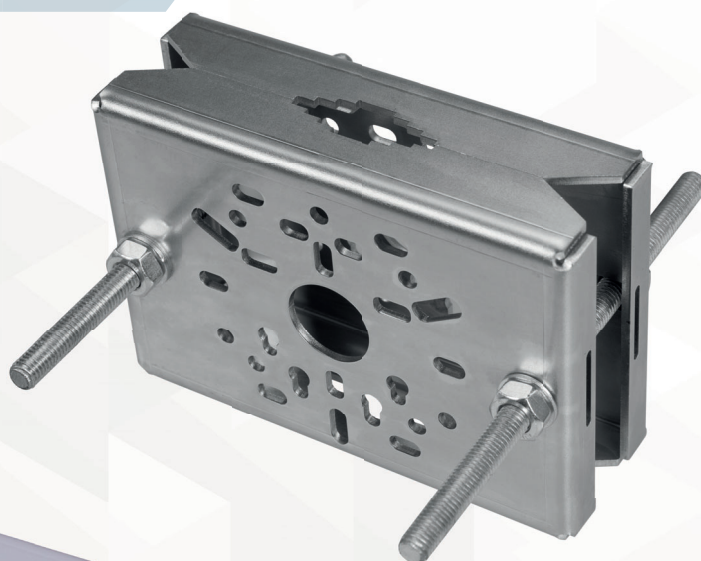
Pole mounts for cameras

TECHNICAL PARAMETERS:

- galvanised steel DX51D+Z250
- optional powder coating (white, black)
- mounting range 30 - 105 mm
- assembly kit included
(threaded screws, washers, nuts)
- a large number of holes for easy installation of devices
- colors:



galvanised



**ASSEMBLY KIT
INCLUDED**

POST HOLDER FOR CAMERAS

SYMBOL	NAME
CH-G	Post holder for cameras, galvanised
CH-W	Post holder for cameras, white
CH-B	Post holder for cameras, black

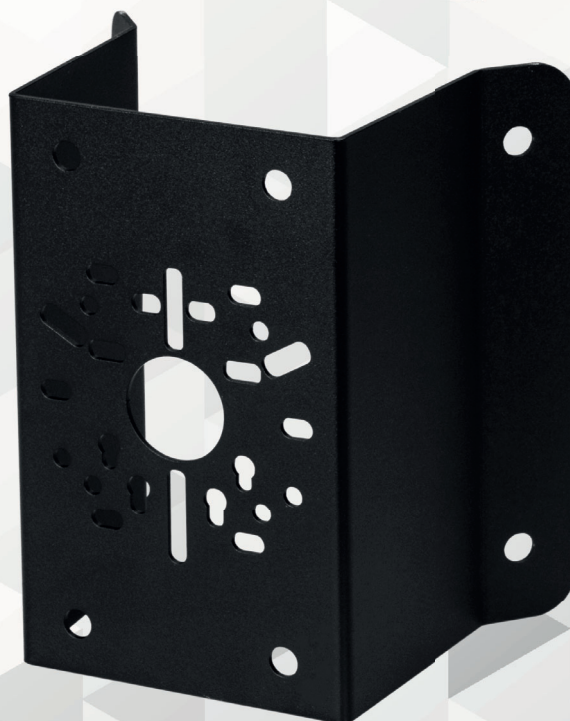
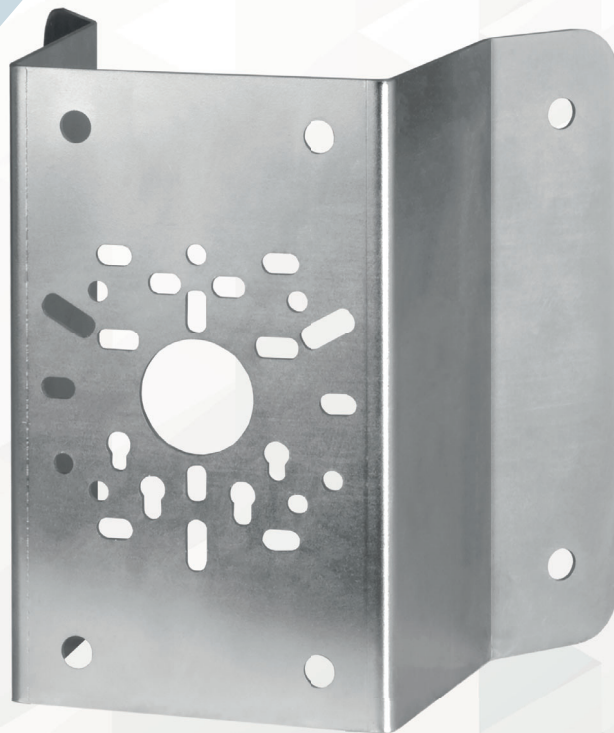
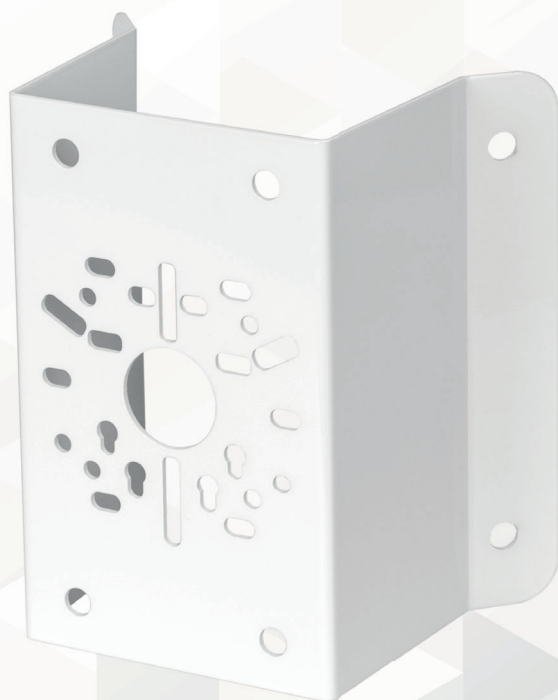
Corner brackets for cameras

TECHNICAL PARAMETERS:

- galvanised steel DX51D+Z250
- optional powder coating (white, black)
- installation directly to the wall of the building
- diameter of mounting holes \varnothing 10 mm
- a large number of holes for easy installation of devices
- colors:



galvanised



CORNER HOLDERS FOR CAMERAS

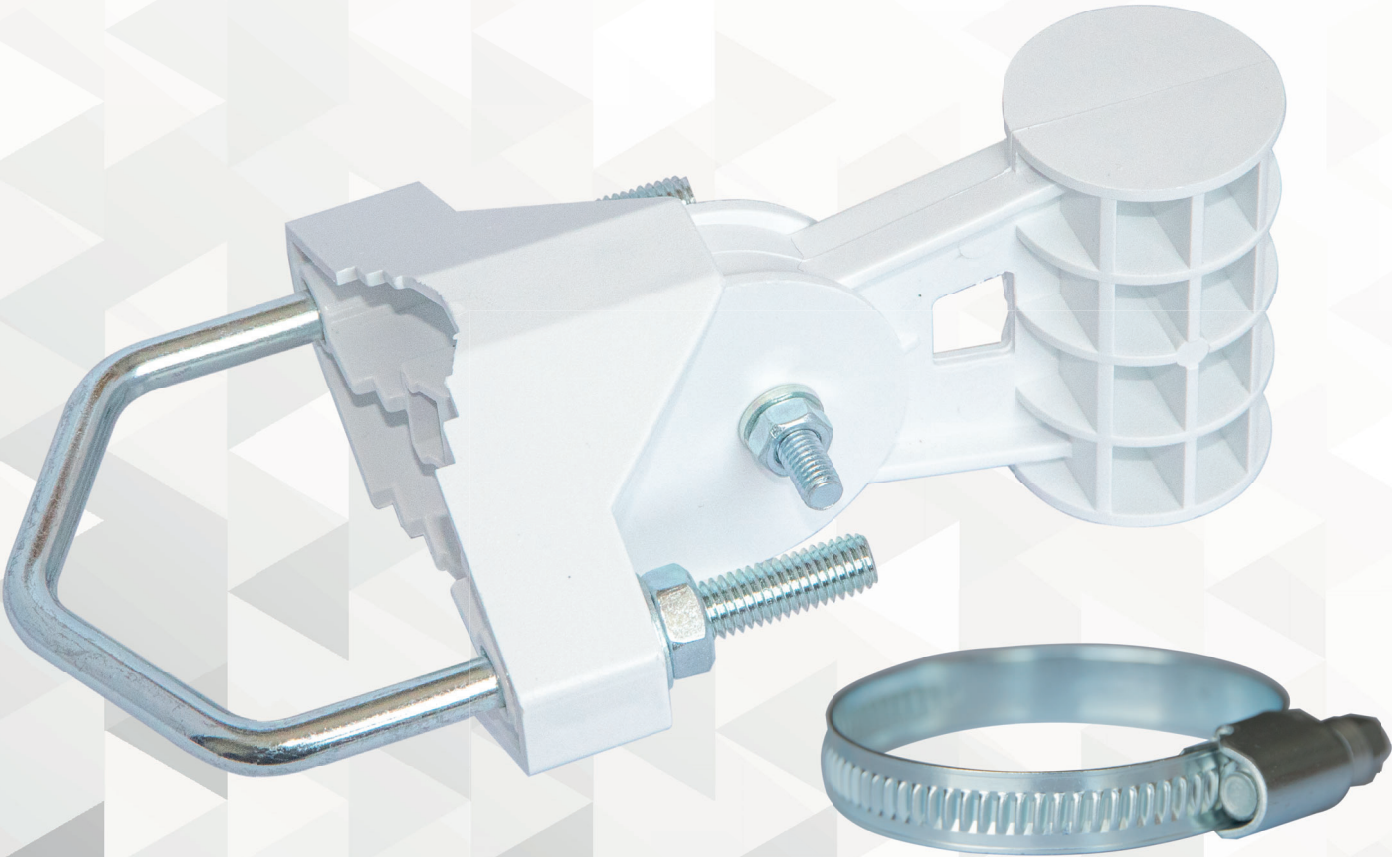
SYMBOL	NAME
CHC-G	Corner holder for cameras, galvanised
CHC-W	Corner holder for cameras, white
CHC-B	Corner holder for cameras, black

Bracket mini loco

TECHNICAL PARAMETERS:

- ABS plastic
- pole diameter range: max. 65 mm
- M8 pin for stable mounting on mast or boom
- adjustable up to 90° in the horizontal plane
- mount compatible with mikrotik SXT series
- possible installation with extension pins to a brick wall
- colors:

RAL 9003



ASSEMBLY KIT INCLUDED

BRACKET MINI LOCO

SYMBOL	NAME
BML-K	Mini Bracket Loco, carton (band)
BML-K-SXT	Mini Bracket Loco, carton (without band) SXT

HOUSE EQUIPMENT


Flush-mounted bio-fireplaces	56
Surface bio-fireplaces	57
Garden fireplaces	58



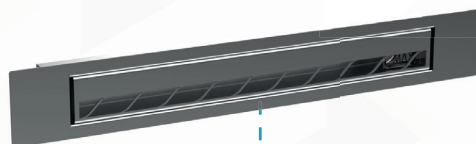
House
equipment

Flush-mounted bio-fireplaces

TECHNICAL PARAMETERS:

- galvanised, powder coated steel with fire-resistant paint up to 550°C
- standard PN-EN 16647:2015-11
- flush-mounted installation
- adjustable heat dissipating hood
- fenix double-coated torch made of acid-resistant sheet metal
- tempered glass 4 mm
- aromatizer
- element for regulating and extinguishing the flame
- burning time: 1 hour 15 minutes
- width: 700 mm; 900 mm; 1200 mm
- colours of decor: white lacobel; black lacobel; inox
- fireplace colors: 

element to
regulation
and extinguishing
flame



Fenix burner

lacobel black

lacobel white

INOX

tempered glass

aromatizer


adjustable canopy

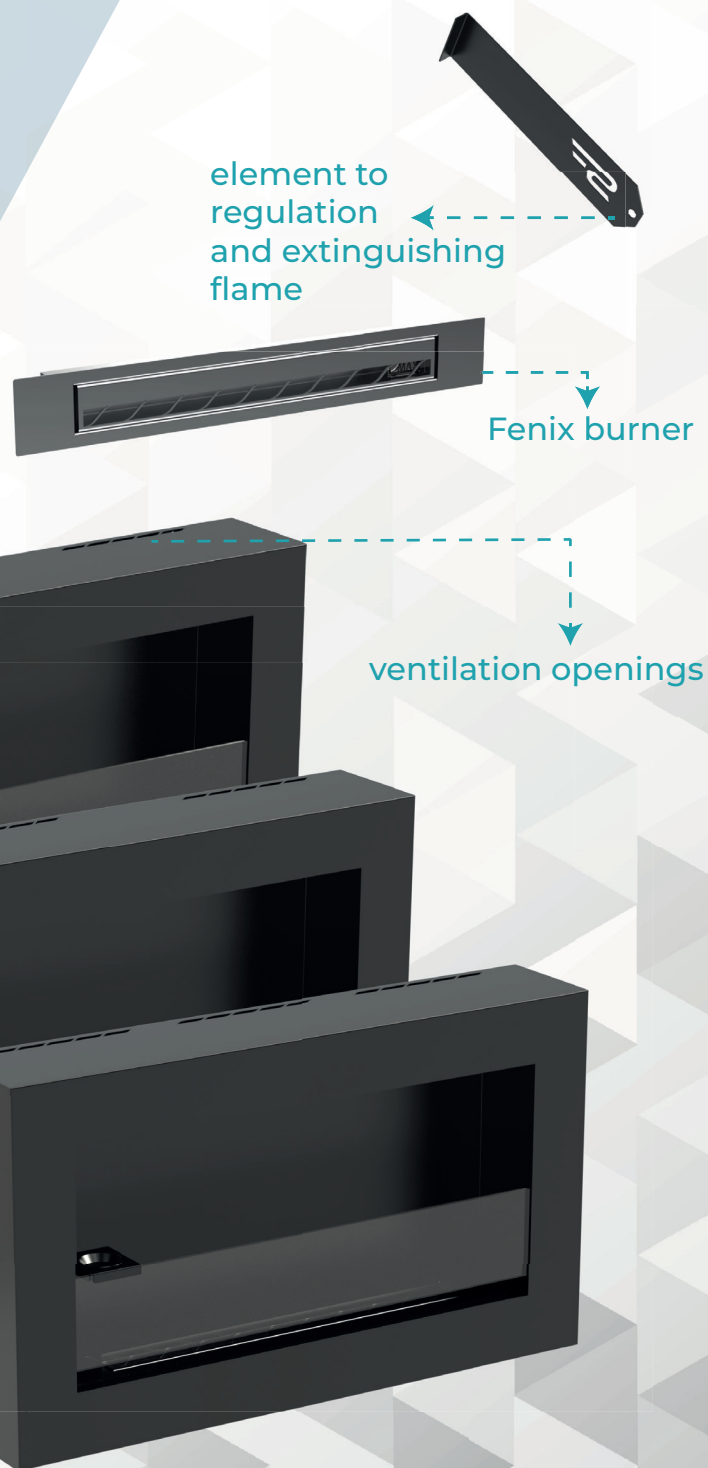
FLUSH-MOUNTED BIO-FIREPLACES

SYMBOL	NAME
BFM-OUZI-700-IX-BG	Biofireplace OUZI 700x400x125 Color Black Flush-mounted Inox
BFM-OUZI-900-IX-BG	Biofireplace OUZI 900x400x125 Color Black Flush-mounted Inox
BFM-OUZI-1200-IX-BG	Biofireplace OUZI 1200x400x125 Color Black Flush-mounted Inox
BFM-TUZI-700-LCW-BG	Biofireplace TUZI 700x400x125 Color Black Flush-mounted Lacobel White
BFM-TUZI-900-LCW-BG	Biofireplace TUZI 900x400x125 Color Black Flush-mounted Lacobel White
BFM-TUZI-1200-LCW-BG	Biofireplace TUZI 1200x400x125 Color Black Flush-mounted Lacobel White
BFM-VELA-700-LCB-BG	Biofireplace VELA 700x400x125 Color Black Flush-mounted Lacobel Black
BFM-VELA-900-LCB-BG	Biofireplace VELA 900x400x125 Color Black Flush-mounted Lacobel Black
BFM-VELA-1200-LCB-BG	Biofireplace VELA 1200x400x125 Color Black Flush-mounted Lacobel Black

Surface bio-fireplaces

TECHNICAL PARAMETERS:

- galvanised, powder coated steel with fire-resistant paint up to 550°C
- standard PN-EN 16647:2015-11
- surface mounting
- ventilation openings
- Fenix double-coated torch made of acid-resistant sheet metal
- tempered glass 4 mm
- aromatizer
- element for regulating and extinguishing the flame
- burning time: 1 hour 15 minutes
- width: 700 mm; 900 mm; 1200 mm
- fireplace colors: 



SURFACE BIO-FIREPLACES

SYMBOL	NAME
BSM-MELIO-700-BG	Biofireplace MELIO 700x400x135 Color Black Surface
BSM-MELIO-900-BG	Biofireplace MELIO 900x400x135 Color Black Surface
BSM-MELIO-1200-BG	Biofireplace MELIO 1200x400x135 Color Black Surface



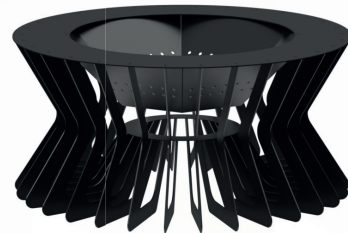
FG-ZULU 900x348

ZULU



FG-ORION 900x350

ORION



FG-SIERRA 900x430

SIERRA



Scan QR code
and check
full offer
of garden
fireplaces



FG-FREYA 955x400

FREYA



FG-NORMA 774x343

NORMA



FG-CRUX 600x225
FG-CRUX 800x300

CRUX



FG-HYDRA 600x225
FG-HYDRA 800x300

HYDRA



FG-PAVO 997x650

PAVO



FG-CYGNUS 1008x1084


CYGNUS



FG-LIMA 997x650

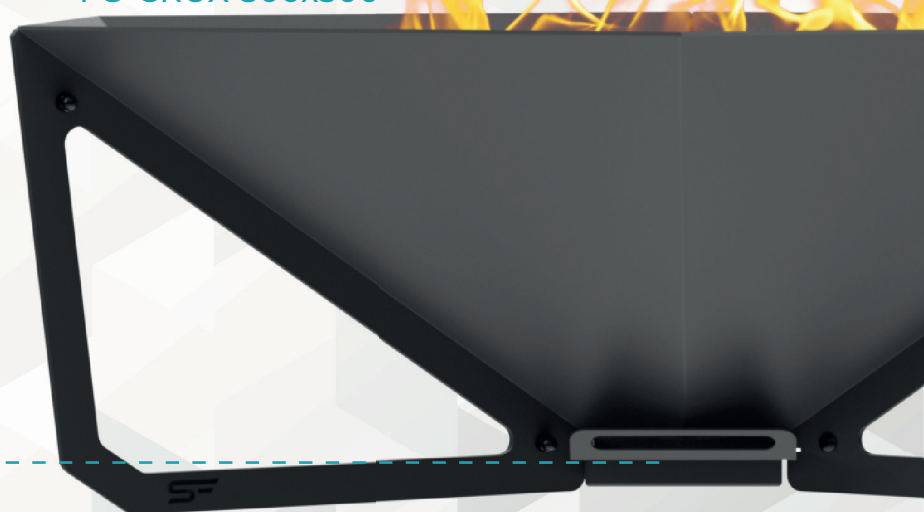
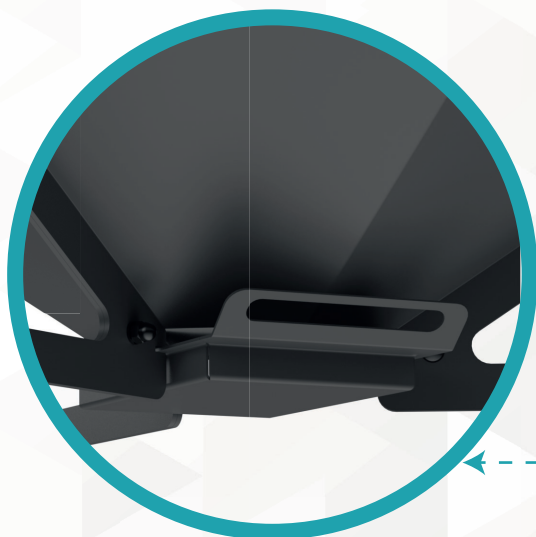
LIMA

TECHNICAL PARAMETERS:

- boiler steel; strength up to 900°C; 3 mm
- powder coated with heat-resistant paint
- outside
- colors: 

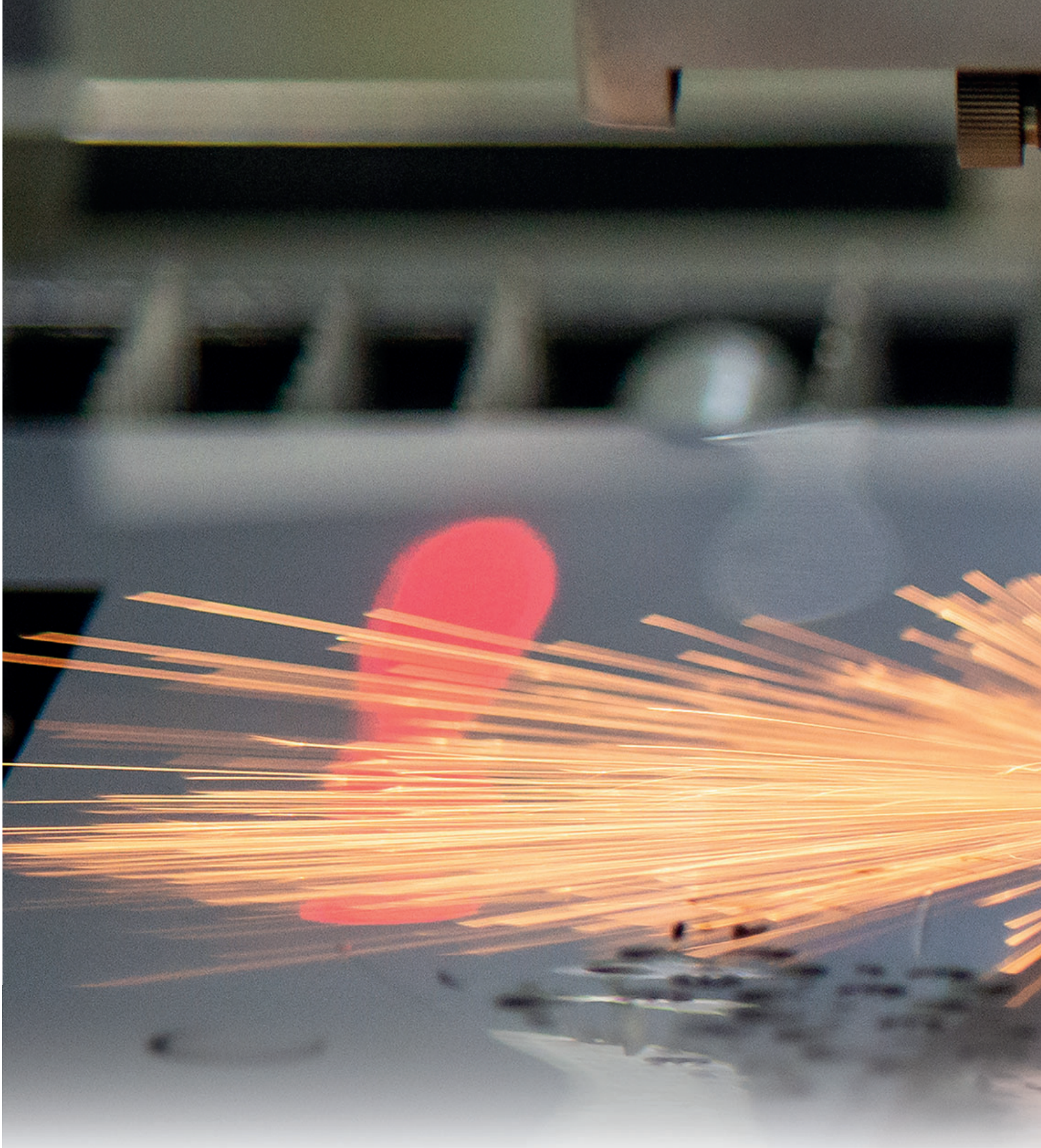
retractable ashtray

FG-CRUX 800x300



GARDEN FIREPLACES

SYMBOL	NAME
FG-CYGNUS 1008x1084	Fireplace CYGNUS 1008x1084
FG-FREYA 955x400	Fireplace FREYA 955x400
FG-LIMA 997x650	Fireplace LIMA 997x650
FG-NORMA 774x343	Fireplace NORMA 774x343
FG-ORION 900x350	Fireplace ORION 900x350
FG-PAVO 690x377	Fireplace PAVO 690x377
FG-SIERRA 900x430	Fireplace SIERRA 900x430
FG-ZULU 900x348	Fireplace ZULU 900x348
FG-CRUX 600x225	Fireplace CRUX 600x225, unscrewed
FG-CRUX 800x300	Fireplace CRUX 800x300, unscrewed
FG-HYDRA 600x225	Fireplace HYDRA 600x225, unscrewed
FG-HYDRA 800x300	Fireplace HYDRA 800x300, unscrewed



STALFLEX SP. Z O.O.
ul. Piaskowa 134A
97-200 Tomaszów Mazowiecki
Poland
www.stalflex.pl